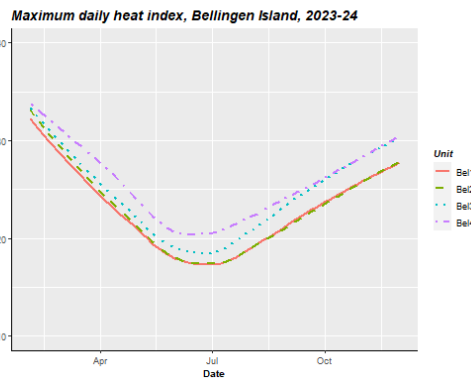
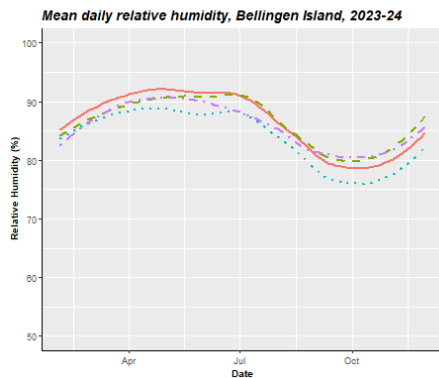
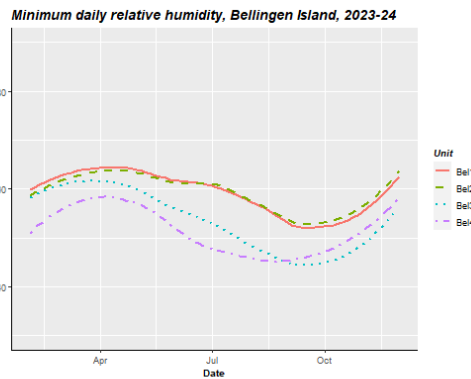
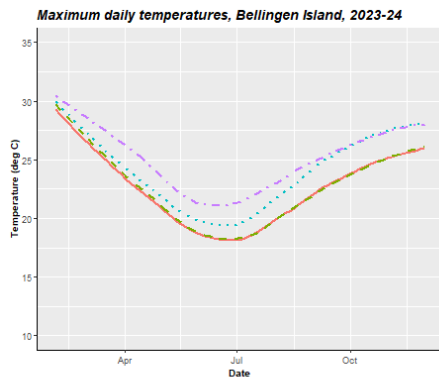
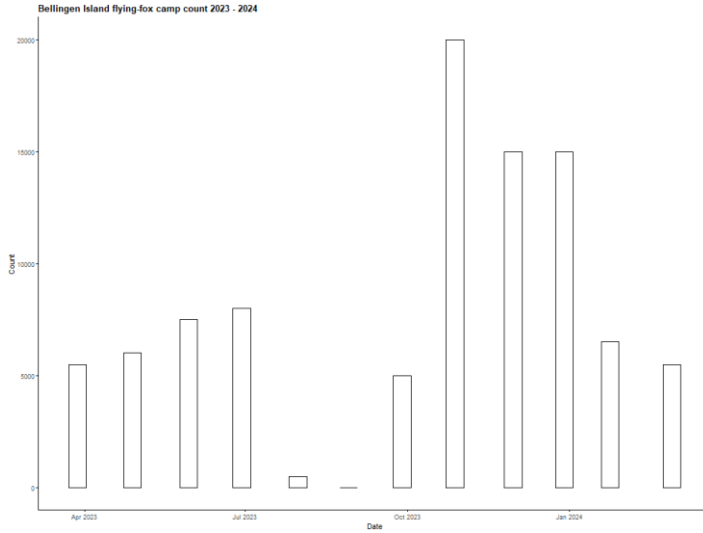


Bellinghen Island Environmental Monitoring Program

Monthly data

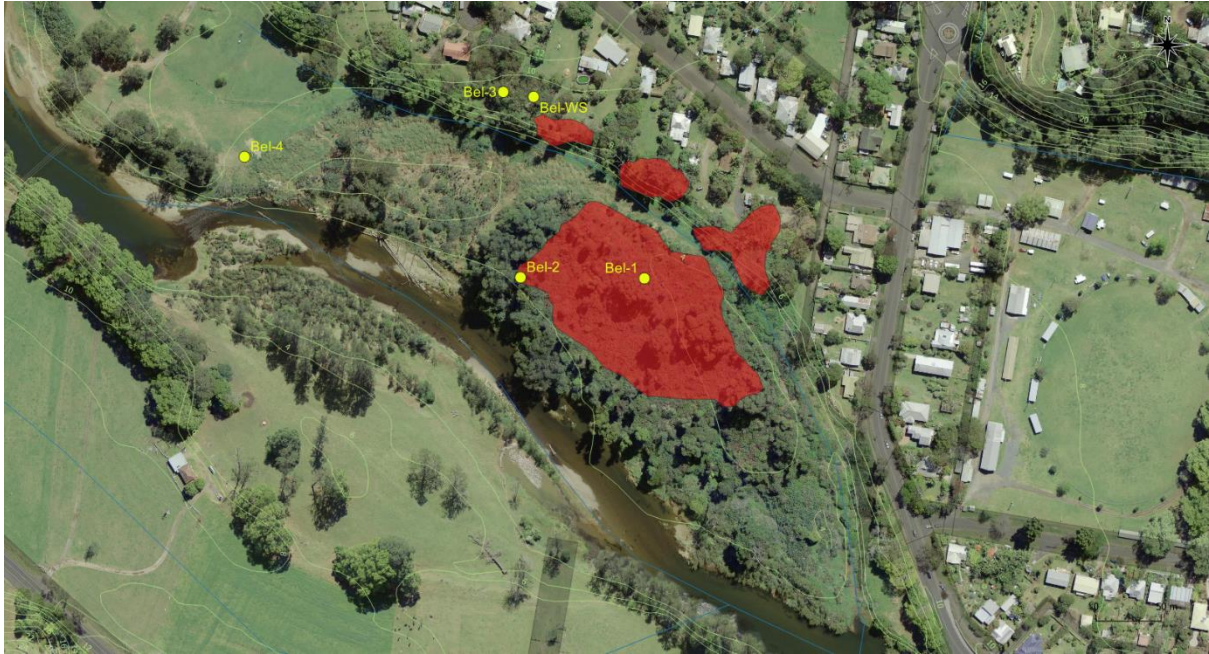


March 2023

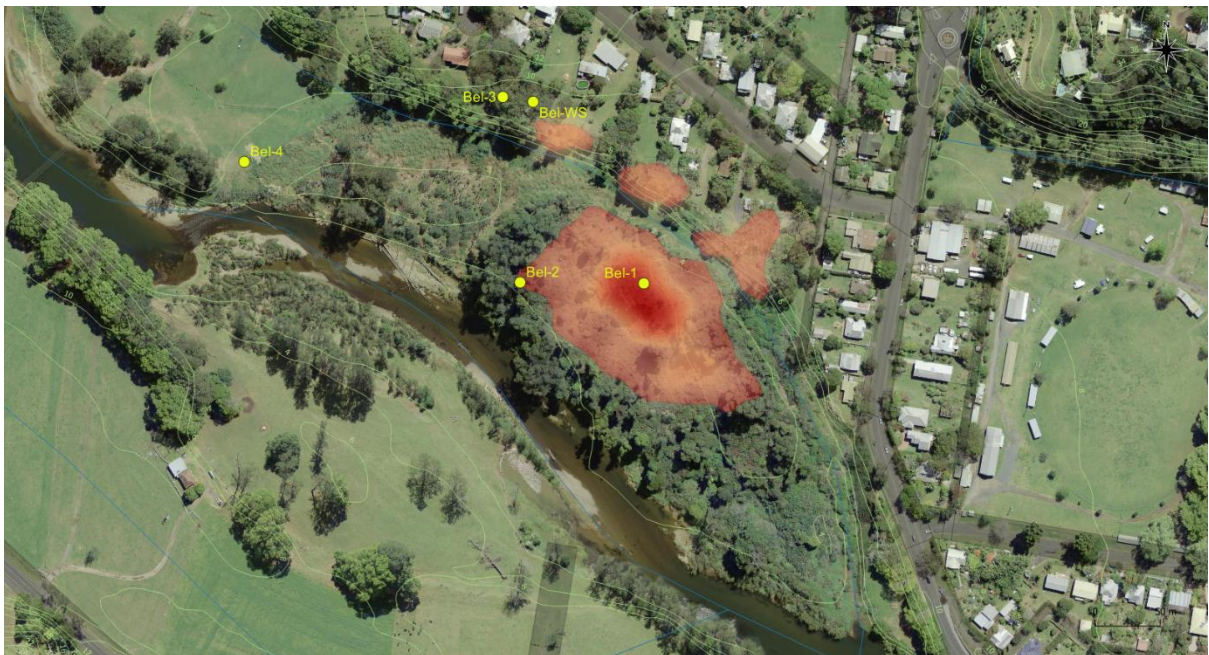
Survey date: 28th March, 2023

Approximate count: 5,500

Population extents:

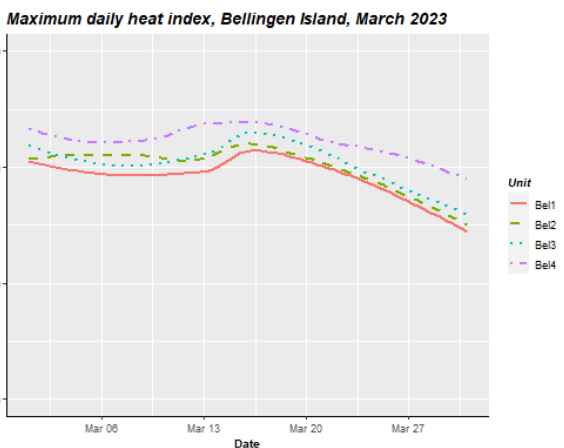
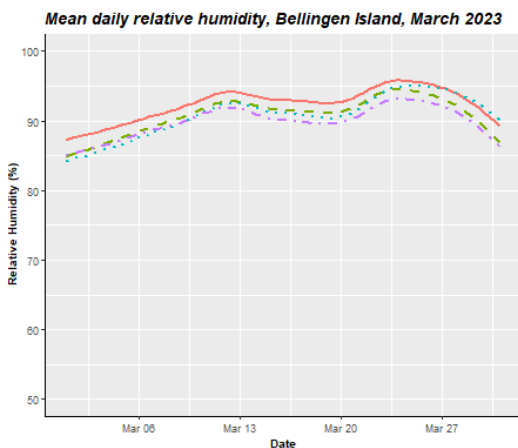
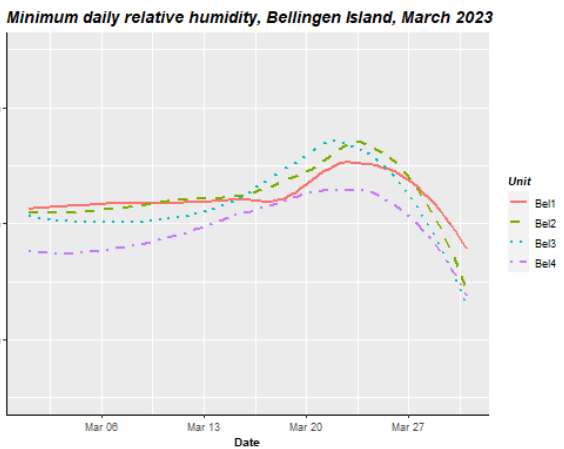
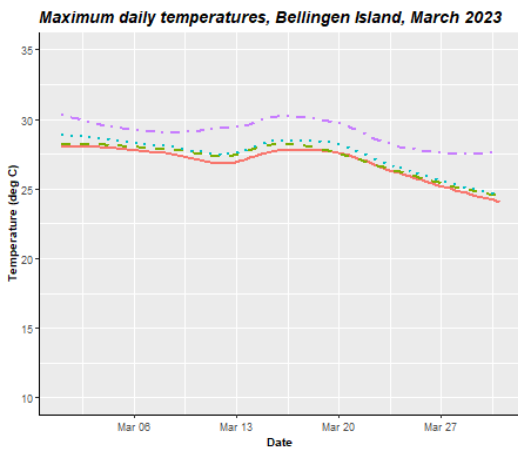
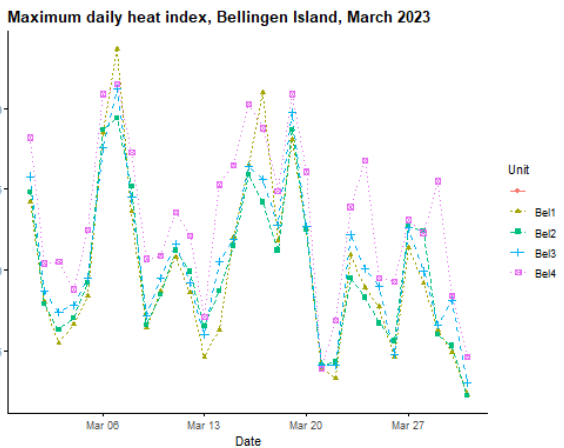
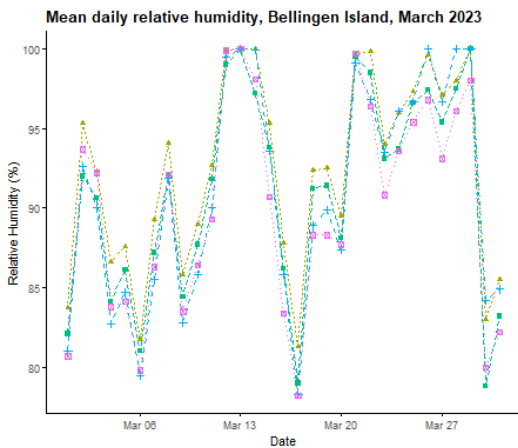
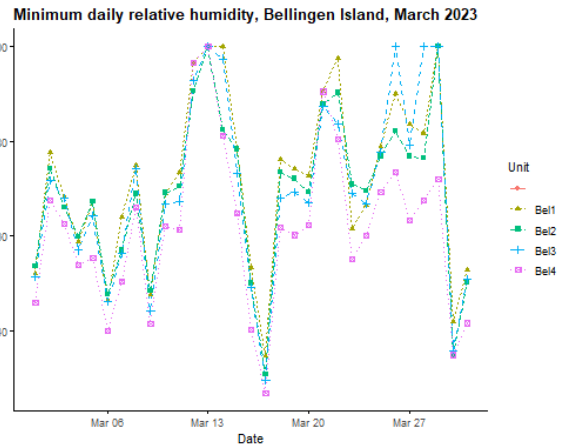
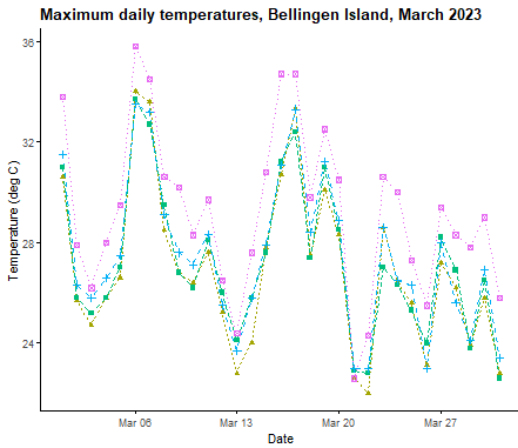


Population distribution:



Population demographics:

Sample:	1	2	3	4	5	6	7	8	9	10	Totals	Percentages
GHFF Adult Male		4	1	3	3	2	5	2			20	20%
GHFF Adult Female		5	3	5	4	3	1	4			25	25%
GHFF Juvenile		1	2	2	3	1	2	1			12	12%
GHFF Mum & Pup			2			2	1	1			6	6%
BFF Adult Male	2								1	3	6	6%
BFF Adult Female	3								3	4	10	10%
BFF Juvenile	1								2	3	6	6%
BFF Mum & Pup	2								2		4	4%



April 2023

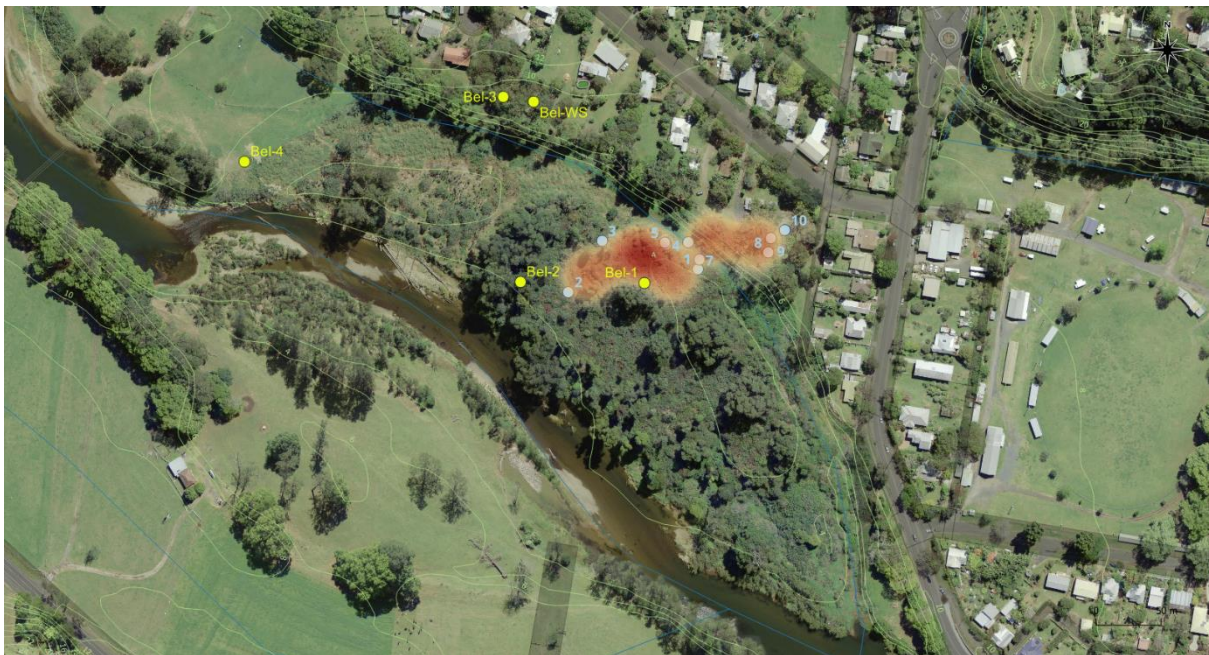
Survey date: 28th April, 2023

Approximate count: 6,000

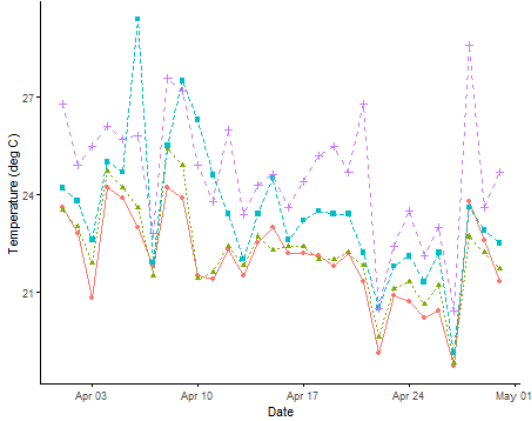
Population extents:



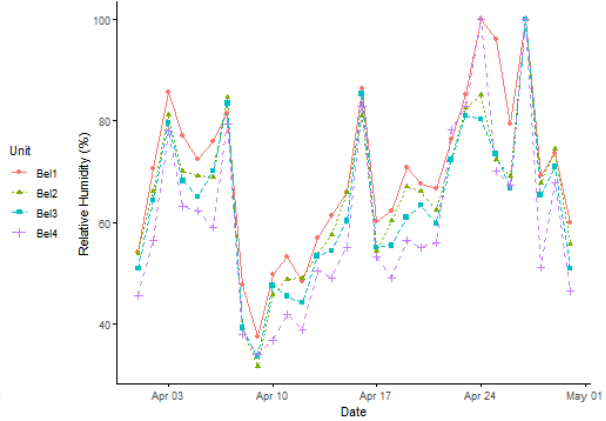
Population distribution:



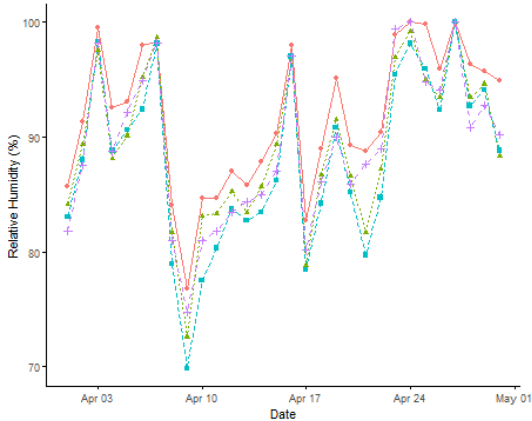
Maximum daily temperatures, Bellinghen Island, April 2023



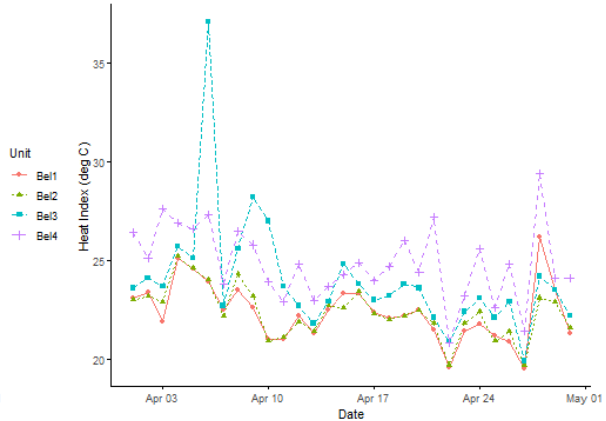
Minimum daily relative humidity, Bellinghen Island, April 2023



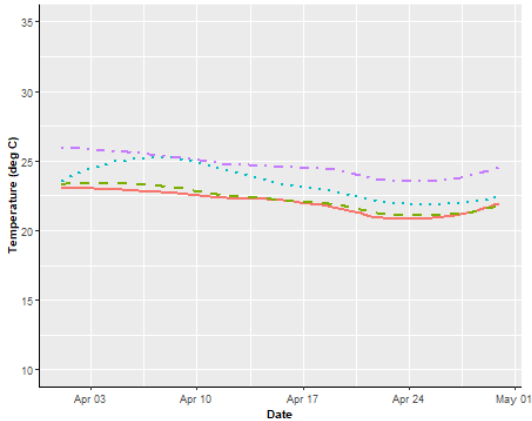
Mean daily relative humidity, Bellinghen Island, April 2023



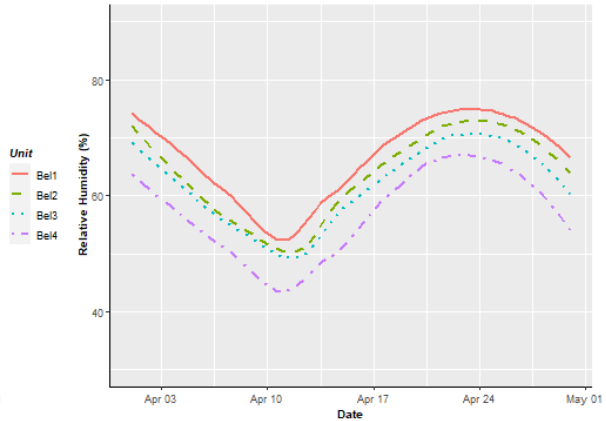
Maximum daily heat index, Bellinghen Island, April 2023



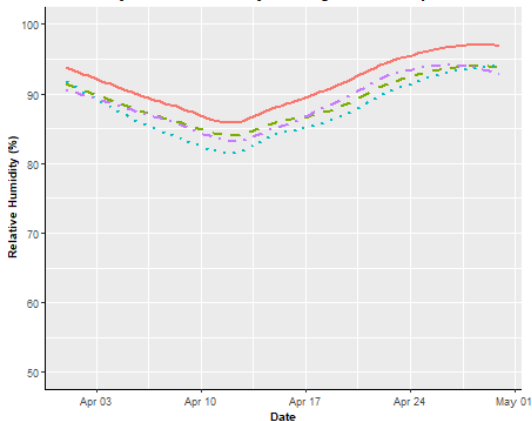
Maximum daily temperatures, Bellinghen Island, April 2023



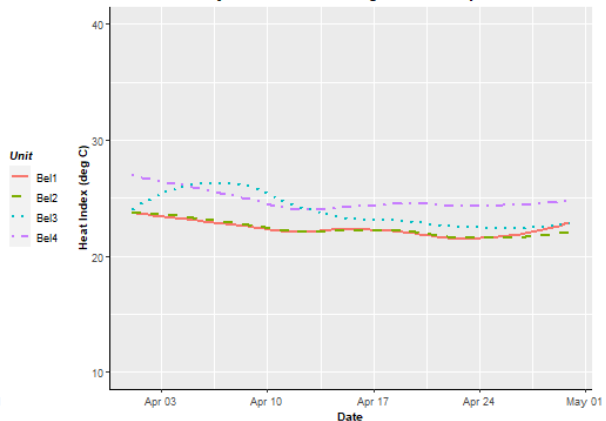
Minimum daily relative humidity, Bellinghen Island, April 2023



Mean daily relative humidity, Bellinghen Island, April 2023



Maximum daily heat index, Bellinghen Island, April 2023



Area 3 after clearing:



May 2023

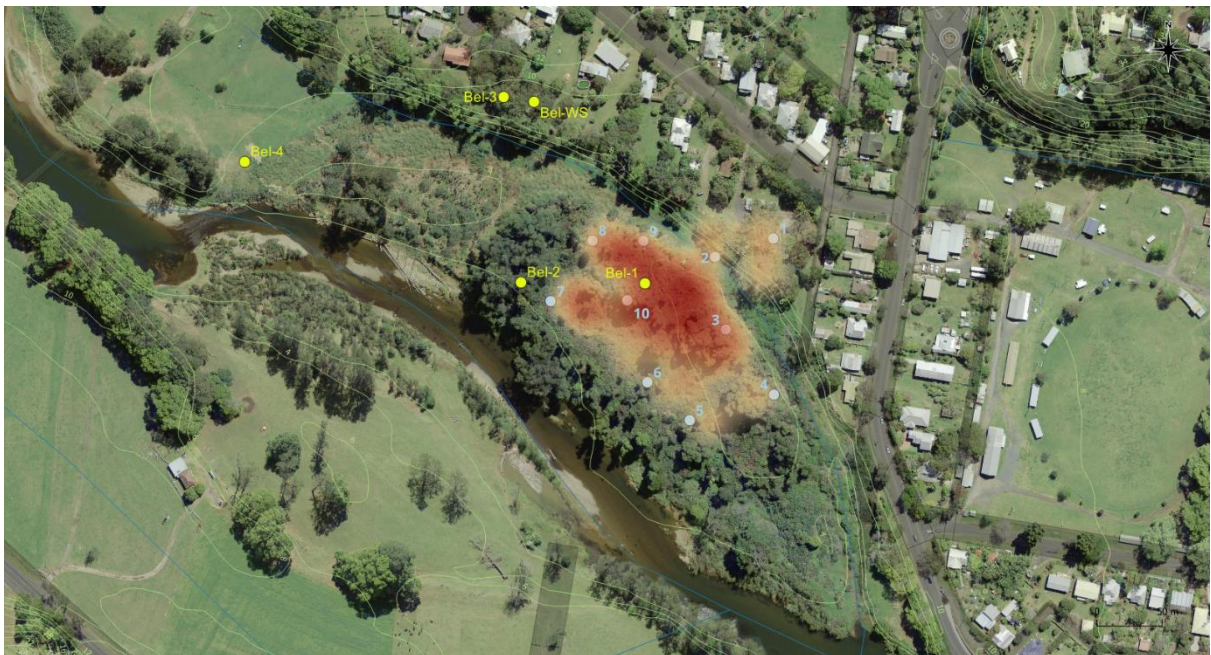
Survey date: 30th May, 2023

Approximate count: 7,500

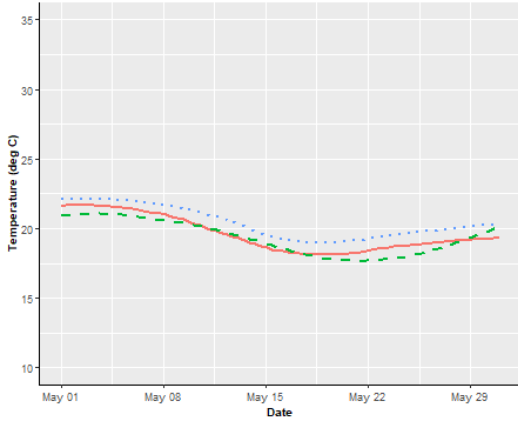
Population extents:



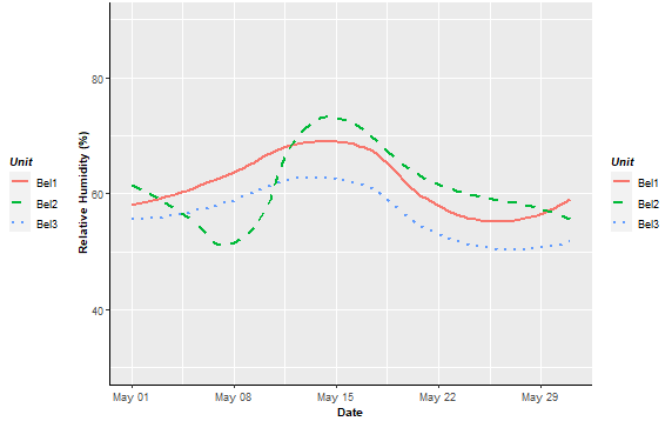
Population distribution:



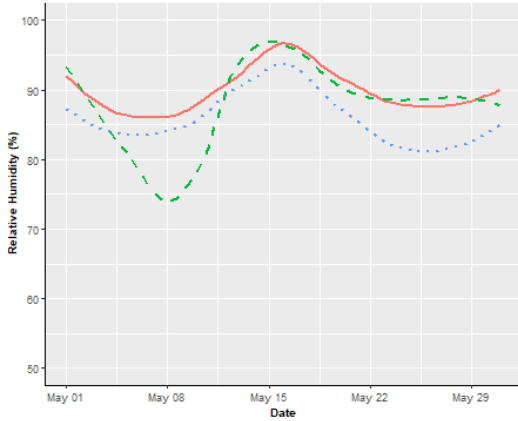
Maximum daily temperatures, Bellinghen Island, May 2023



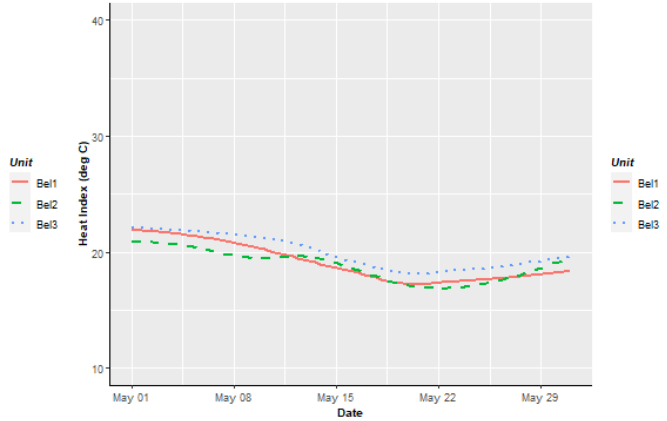
Minimum daily relative humidity, Bellinghen Island, May 2023



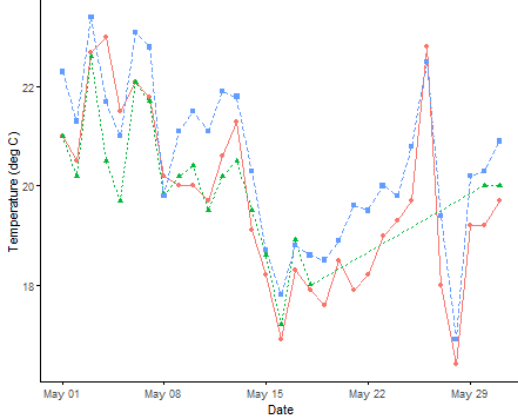
Mean daily relative humidity, Bellinghen Island, May 2023



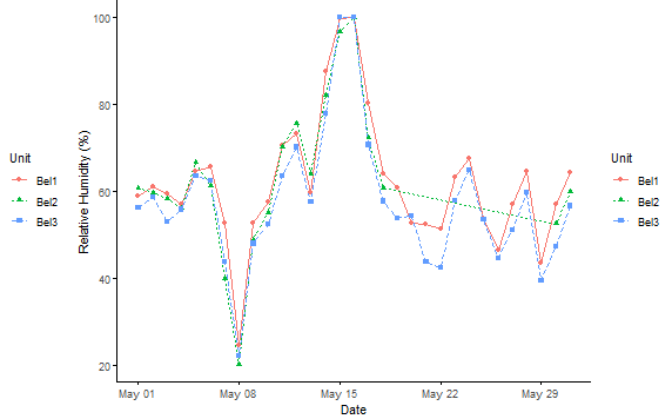
Maximum daily heat index, Bellinghen Island, May 2023



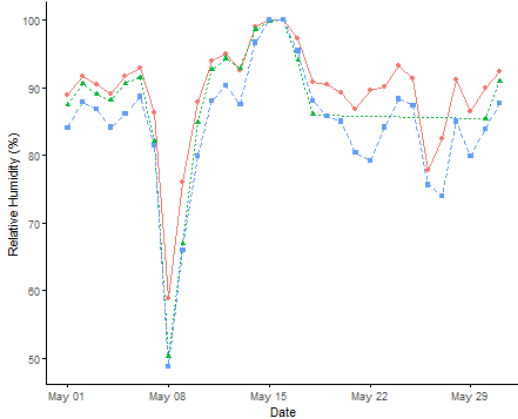
Maximum daily temperatures, Bellinghen Island, May 2023



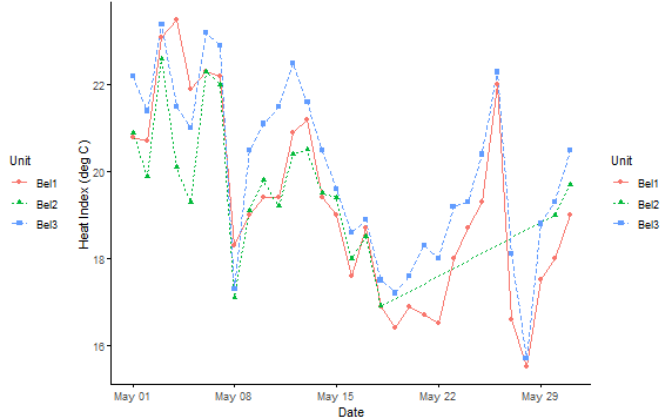
Minimum daily relative humidity, Bellinghen Island, May 2023



Mean daily relative humidity, Bellinghen Island, May 2023



Maximum daily heat index, Bellinghen Island, May 2023





June 2023

Survey date: 29th June, 2023

Approximate count: 8,000

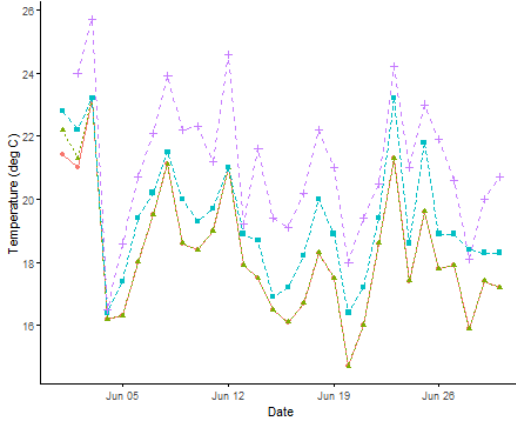
Population extents:



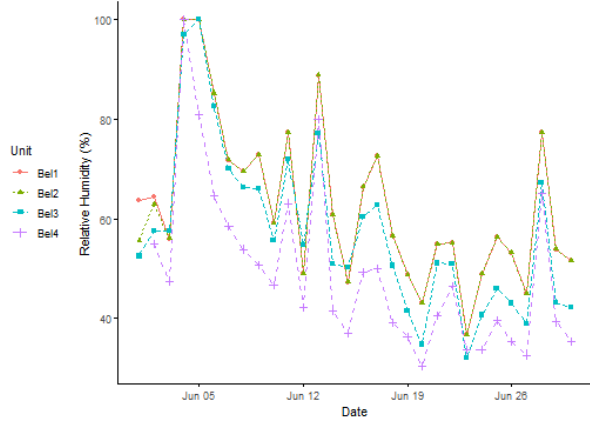
Population distribution:



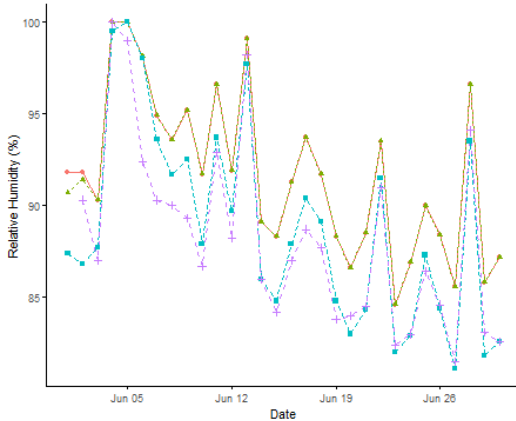
Maximum daily temperatures, Bellingin Island, June 2023



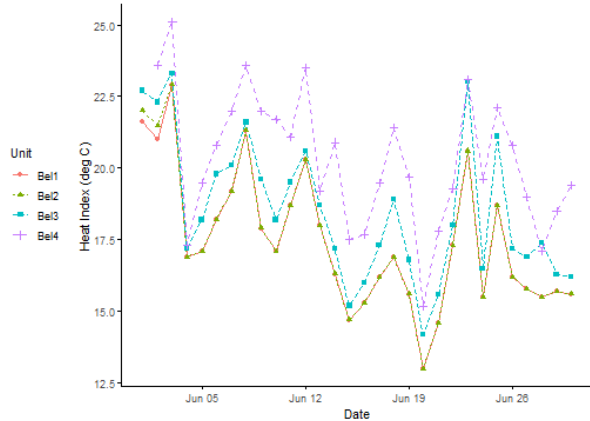
Minimum daily relative humidity, Bellingin Island, June 2023



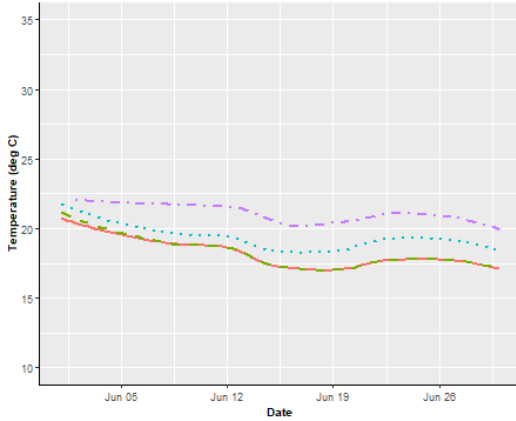
Mean daily relative humidity, Bellingin Island, June 2023



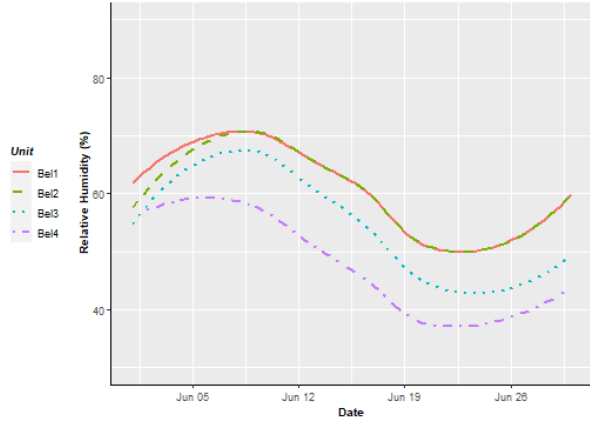
Maximum daily heat index, Bellingin Island, June 2023



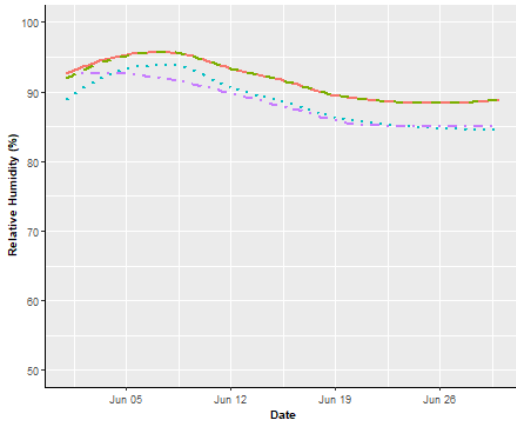
Maximum daily temperatures, Bellingin Island, June 2023



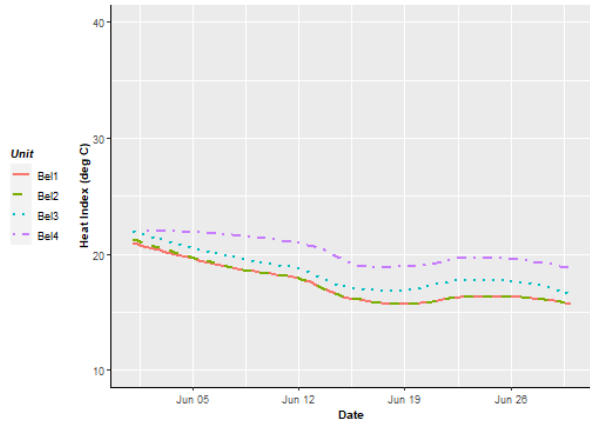
Minimum daily relative humidity, Bellingin Island, June 2023



Mean daily relative humidity, Bellingin Island, June 2023



Maximum daily heat index, Bellingin Island, June 2023



July 2023

Survey date: 31st July, 2023

Approximate count: 500

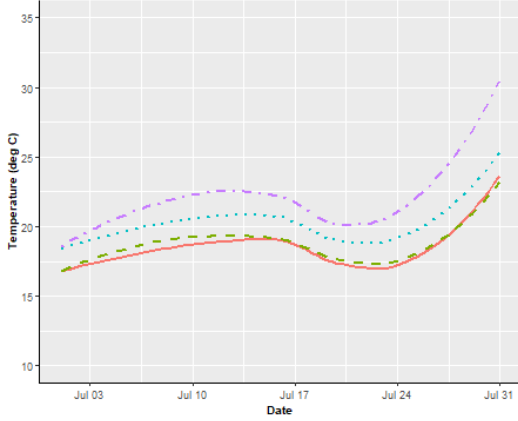
Population extents:



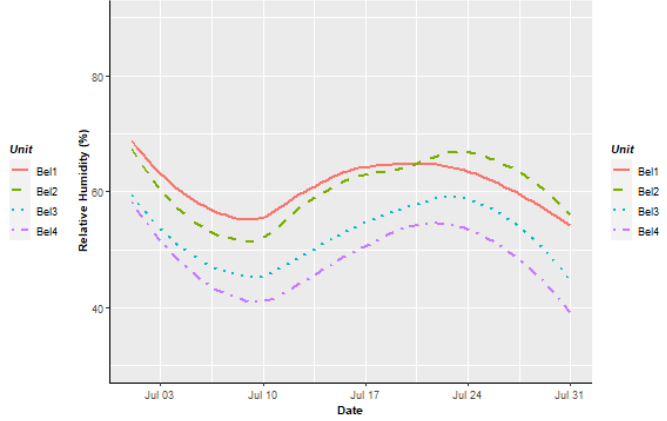
Population distribution:



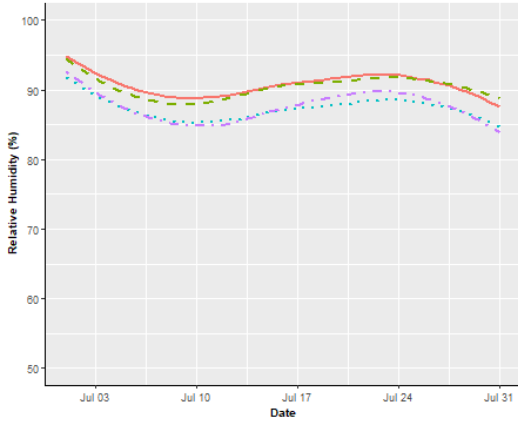
Maximum daily temperatures, Bellingin Island, July 2023



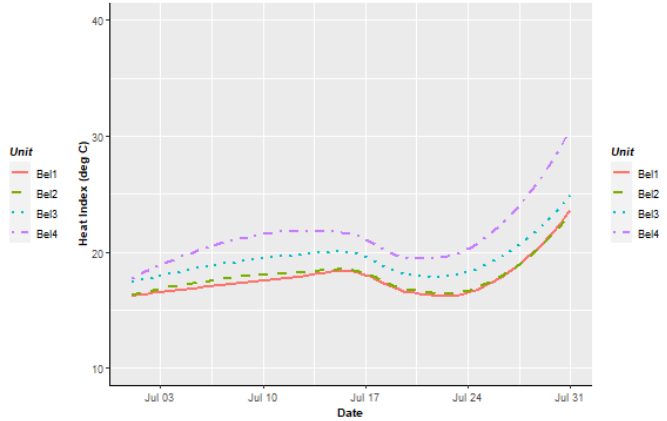
Minimum daily relative humidity, Bellingin Island, July 2023



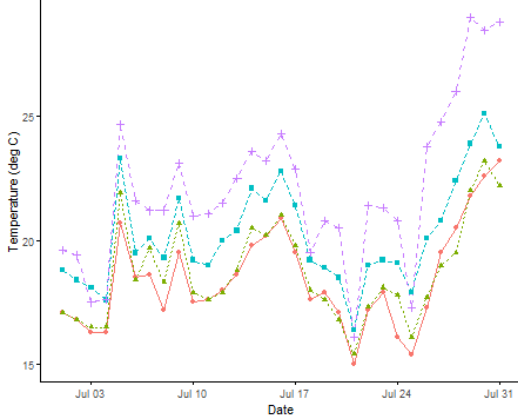
Mean daily relative humidity, Bellingin Island, July 2023



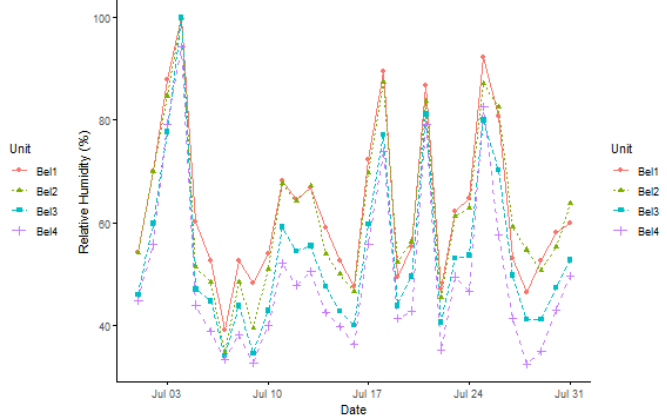
Maximum daily heat index, Bellingin Island, July 2023



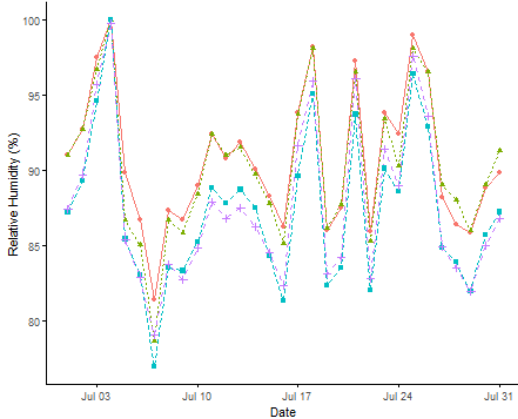
Maximum daily temperatures, Bellingin Island, July 2023



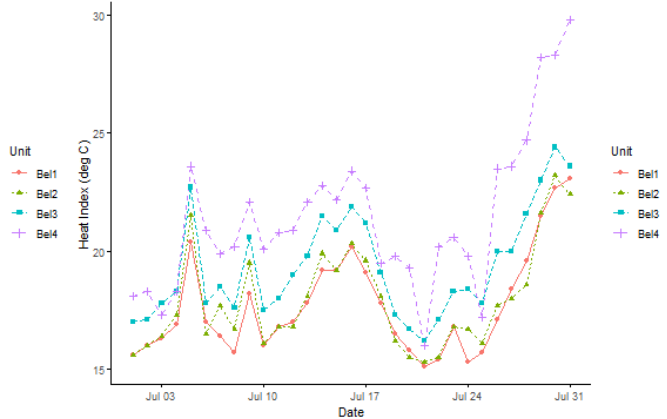
Minimum daily relative humidity, Bellingin Island, July 2023



Mean daily relative humidity, Bellingin Island, July 2023



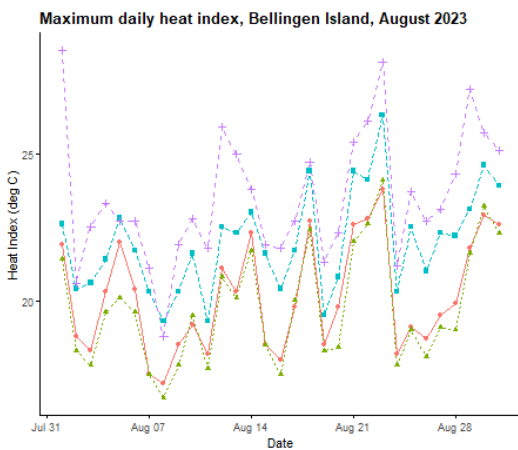
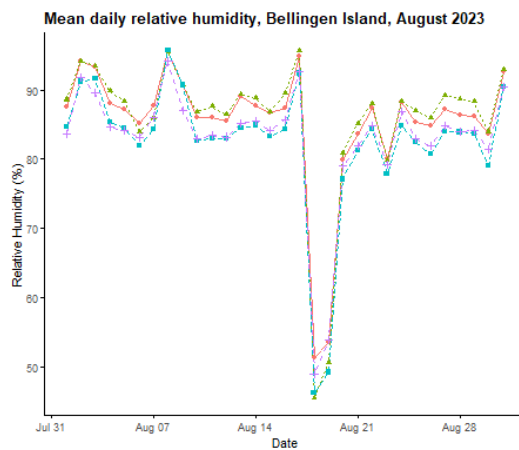
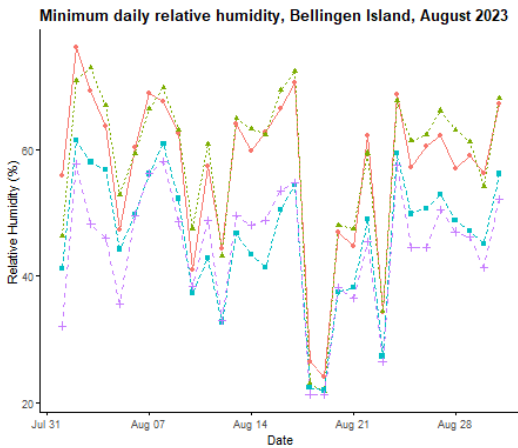
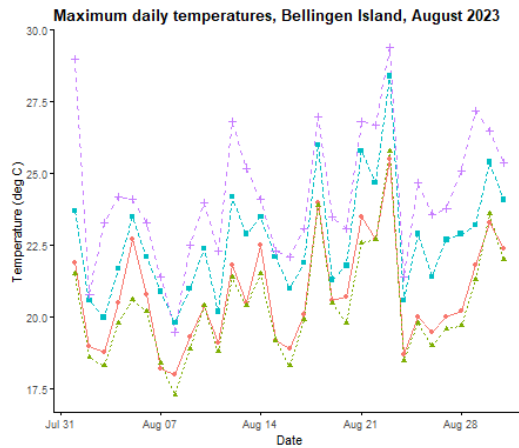
Maximum daily heat index, Bellingin Island, July 2023



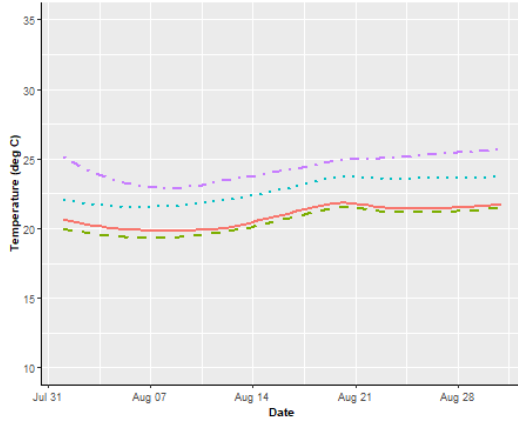
August 2023

Survey date: 29th August, 2023

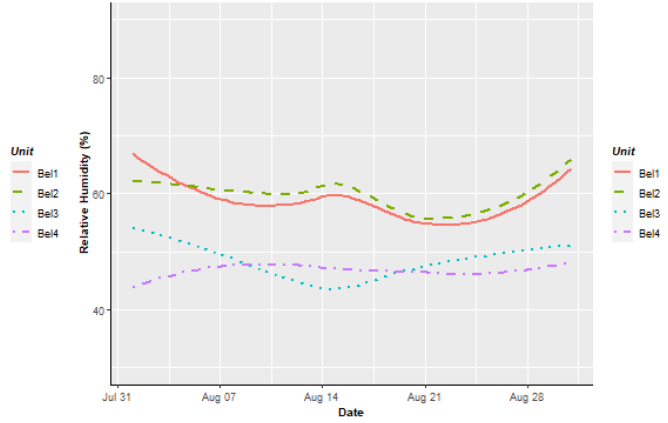
Approximate count: 0



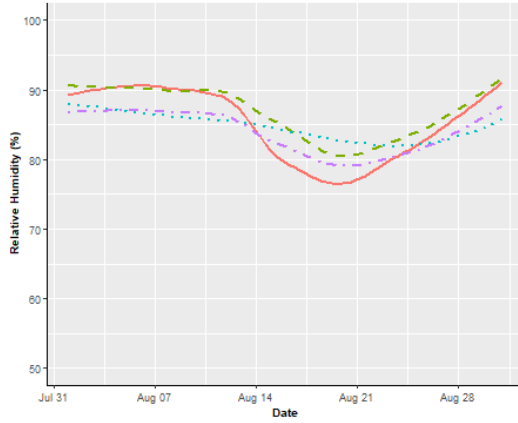
Maximum daily temperatures, Bellingin Island, August 2023



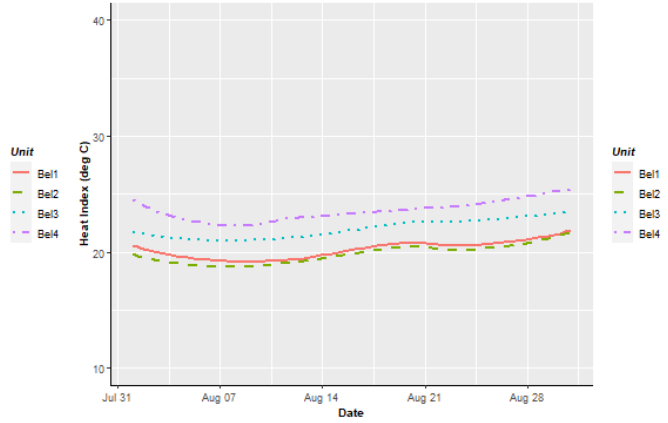
Minimum daily relative humidity, Bellingin Island, August 2023



Mean daily relative humidity, Bellingin Island, August 2023



Maximum daily heat index, Bellingin Island, August 2023



September 2023

Survey date: 28th September, 2023

Approximate count: 5,000

Population extents:



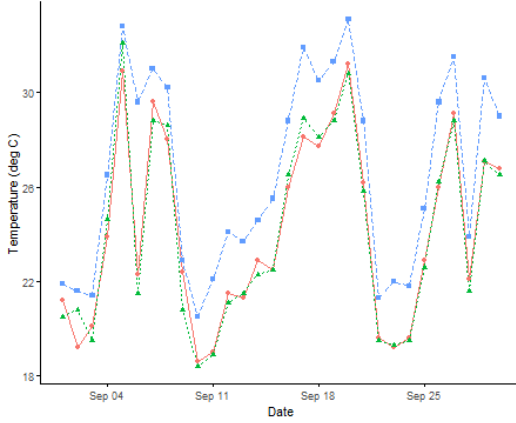
Population distribution:



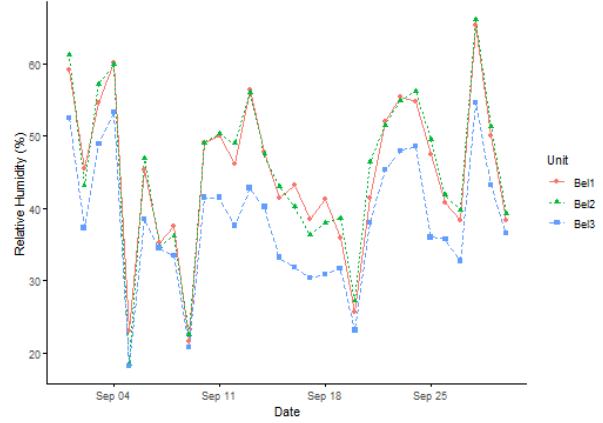
Population demographics:

Sample:	1	2	3	4	5	6	7	8	9	10	Totals	Percentages
GHFF Adult Male			1	3	5	5	6	4	7	3	34	34%
GHFF Adult Female			9	3	5	5	4	6	3	5	40	40%
GHFF Juvenile										2	2	2%
GHFF Mum & Pup											0	0%
BFF Adult Male	10	6		2							18	18%
BFF Adult Female		4		2							6	6%
BFF Juvenile											0	0%
BFF Mum & Pup											0	0%
											Total	Average count
10x10 m area count	43	63	250	250	190	120	53	58	80	220	1327	133

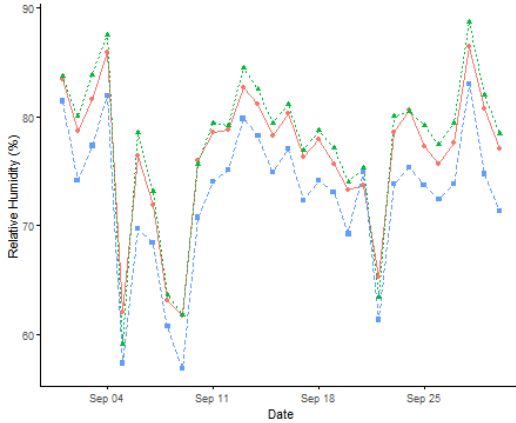
Maximum daily temperatures, Bellingin Island, September 2023



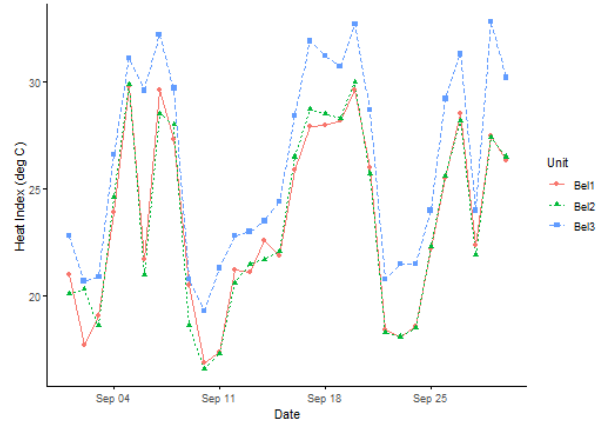
Minimum daily relative humidity, Bellingin Island, September 2023



Mean daily relative humidity, Bellingin Island, September 2023



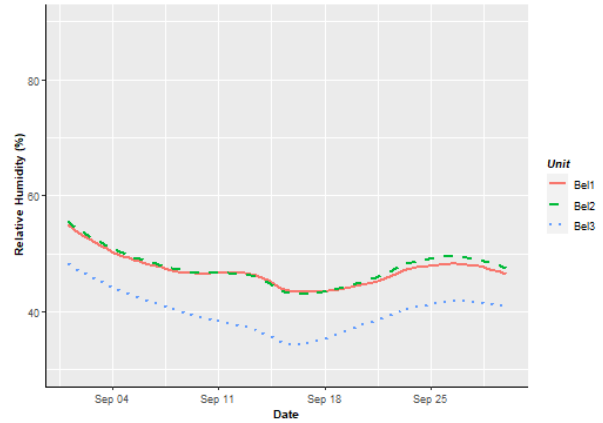
Maximum daily heat index, Bellingin Island, September 2023



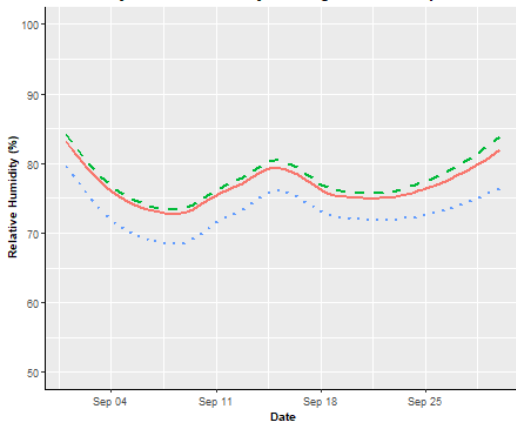
Maximum daily temperatures, Bellingin Island, September 2023



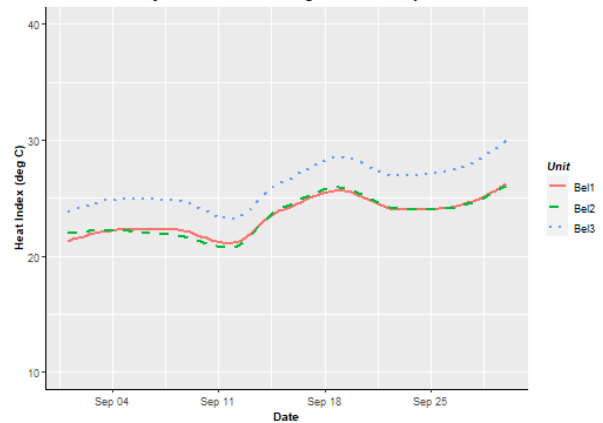
Minimum daily relative humidity, Bellingin Island, September 2023



Mean daily relative humidity, Bellingin Island, September 2023



Maximum daily heat index, Bellingin Island, September 2023



October 2023

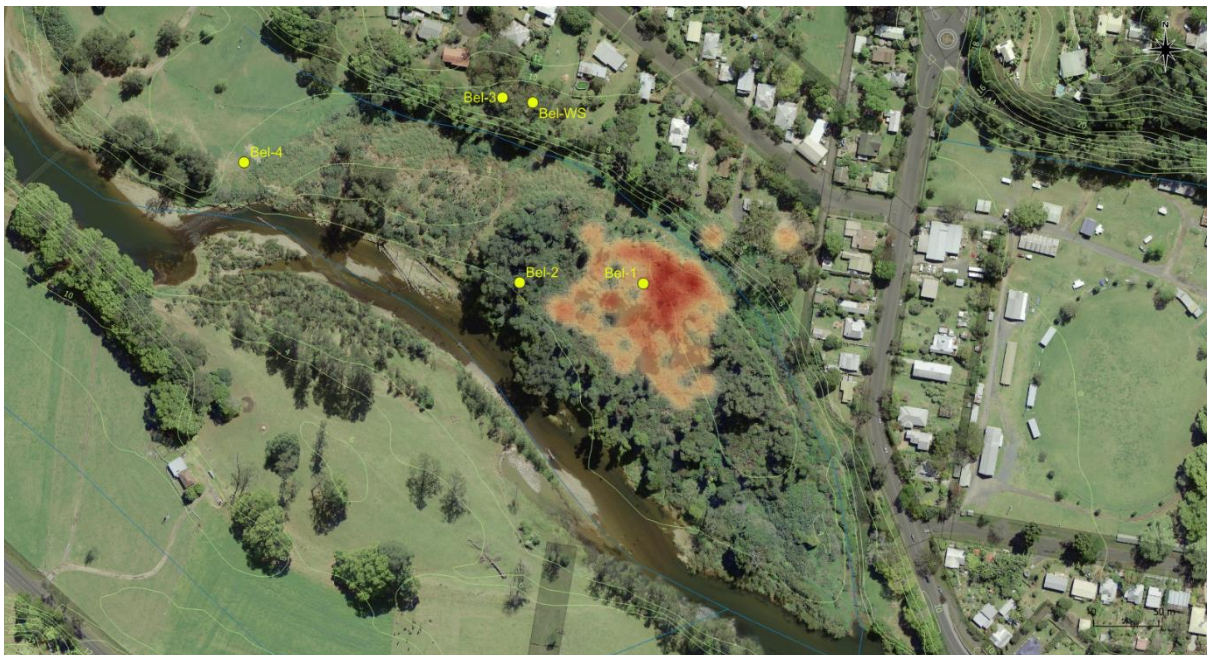
Survey date: 28th October, 2023

Approximate count: 20,000

Population extents:



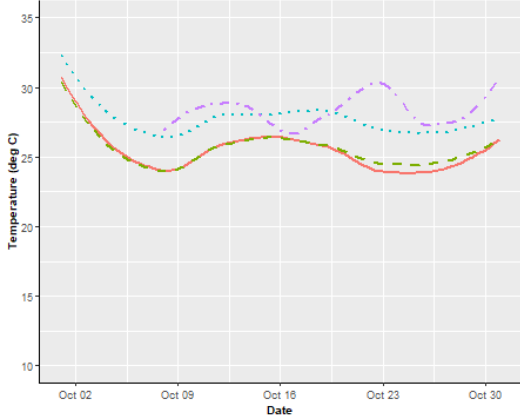
Population distribution:



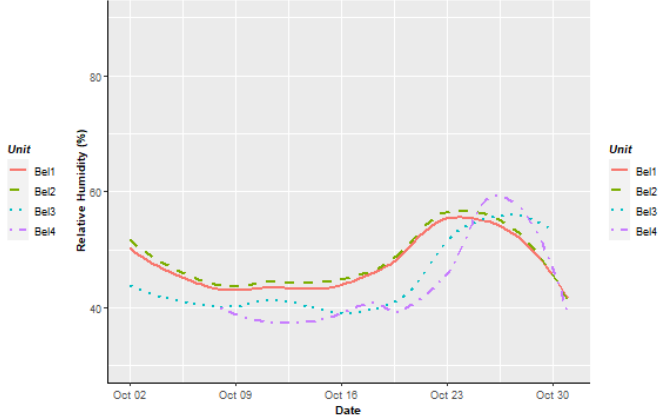
Population demographics:

Sample:	1	2	3	4	5	6	7	8	9	10	Totals	Percentages
GHFF Adult Male		3		4	3	4	4	3	2	2	25	25%
GHFF Adult Female		1	2	2	4	4	3	4	6	5	31	31%
GHFF Juvenile								2	2	2	6	6%
GHFF Mum & Pup		6	3	4	3	2	1	1		1	21	21%
BFF Adult Male	7		1				1				9	9%
BFF Adult Female	2		3				1				6	6%
BFF Juvenile	1										1	1%
BFF Mum & Pup			1								1	1%
											Total	Average count
10x10 m area count	73	220	235	280	91	120	210	110	75	160	1574	157

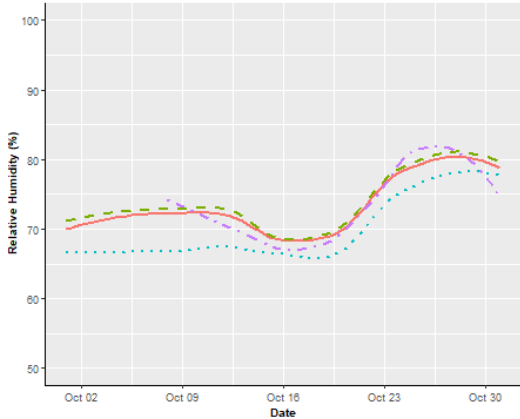
Maximum daily temperatures, Bellingin Island, October 2023



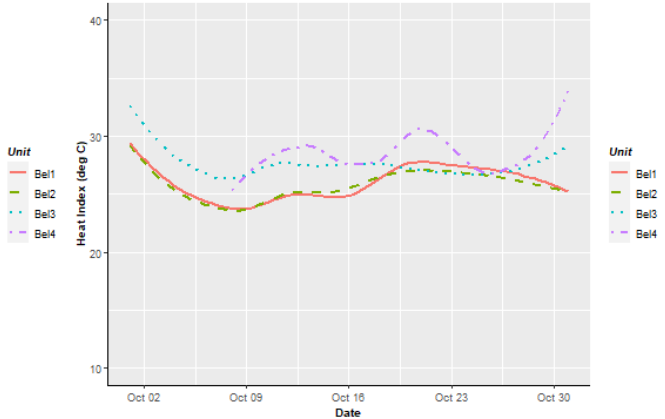
Minimum daily relative humidity, Bellingin Island, October 2023



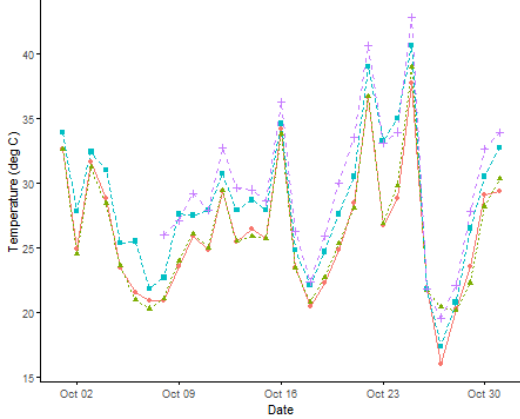
Mean daily relative humidity, Bellingin Island, October 2023



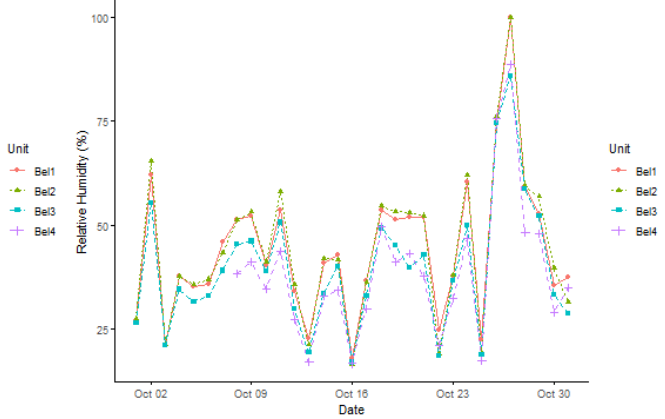
Maximum daily heat index, Bellingin Island, October 2023



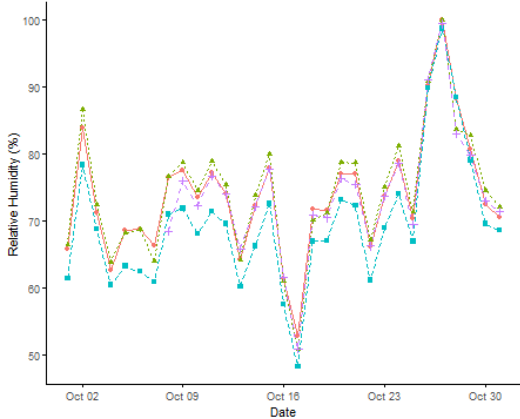
Maximum daily temperatures, Bellingin Island, October 2023



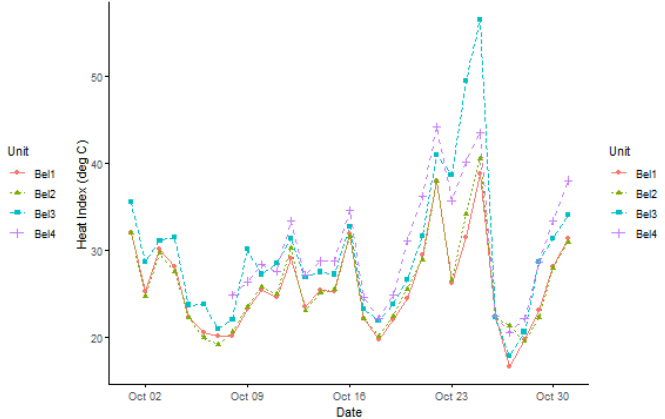
Minimum daily relative humidity, Bellingin Island, October 2023



Mean daily relative humidity, Bellingin Island, October 2023



Maximum daily heat index, Bellingin Island, October 2023



November 2023

Survey date: 30th November, 2023

Approximate count: 15,000

Population extents:



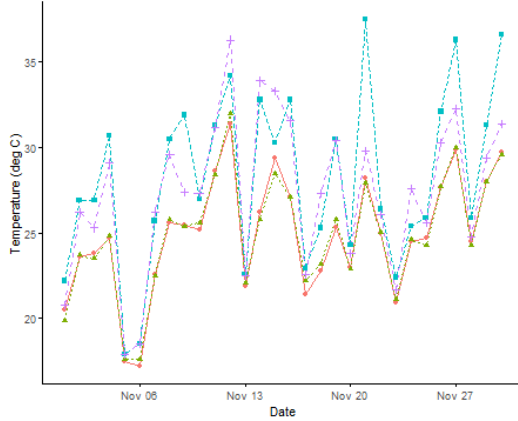
Population distribution:



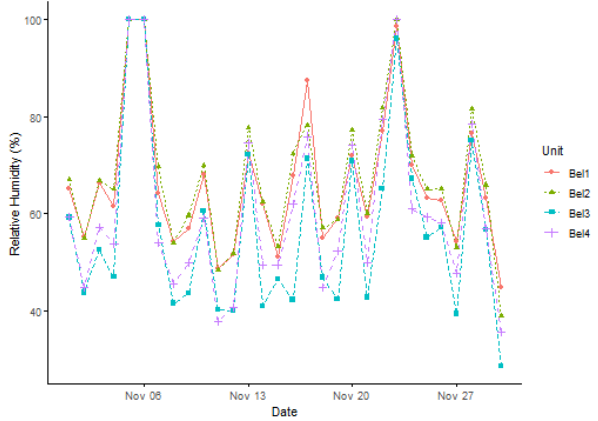
Population demographics:

Sample:	1	2	3	4	5	6	7	8	9	10	Totals	Percentages
GHFF Adult Male	1	3	3	3	2	5	5	2	1		25	25%
GHFF Adult Female	7	4	6	4	4	5	4	3	1		38	38%
GHFF Juvenile					2						2	2%
GHFF Mum & Pup	2	3	1	3	2		1	5	1		18	18%
BFF Adult Male									2	2	4	4%
BFF Adult Female									1	1	2	2%
BFF Juvenile											0	0%
BFF Mum & Pup									4	7	11	11%
											Total	Average count
10x10 m area count	140	95	85	50	65	80	75	160	180	90	1020	102

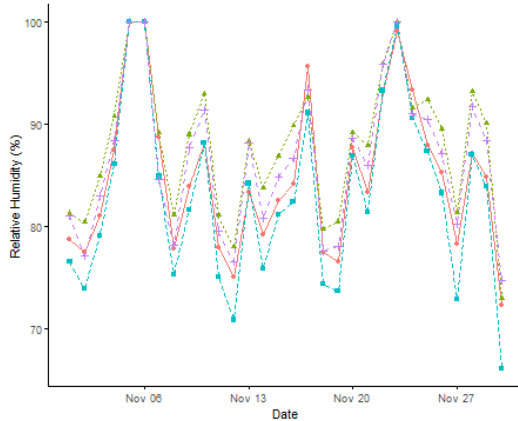
Maximum daily temperatures, Bellingen Island, November 2023



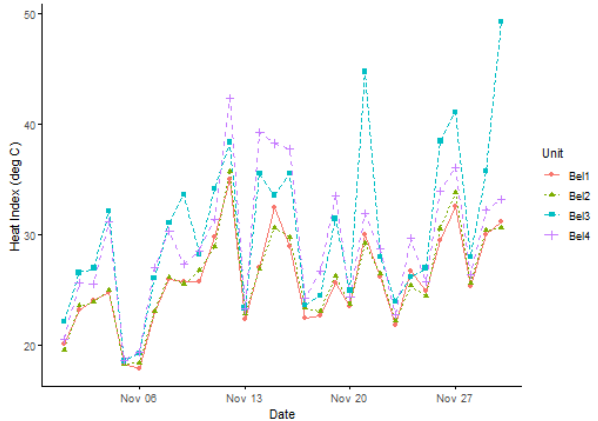
Minimum daily relative humidity, Bellingen Island, November 2023



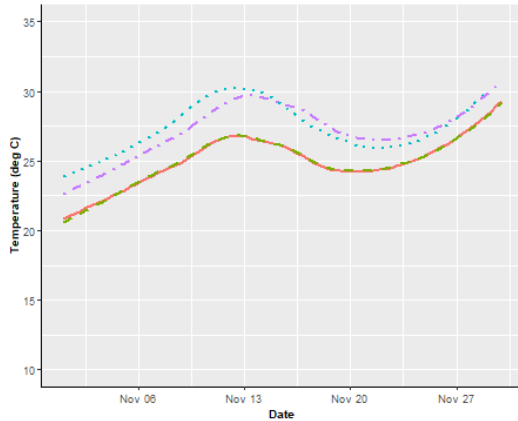
Mean daily relative humidity, Bellingen Island, November 2023



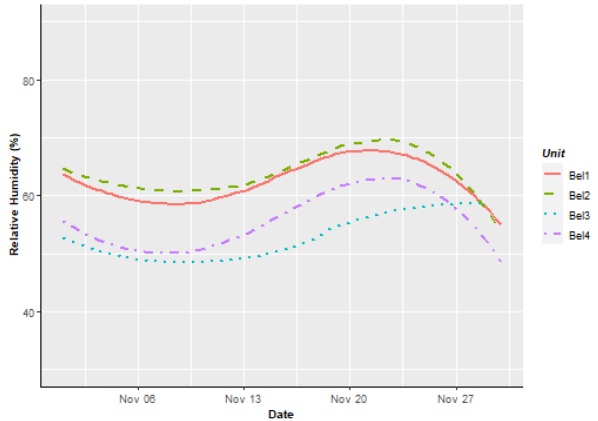
Maximum daily heat index, Bellingen Island, November 2023



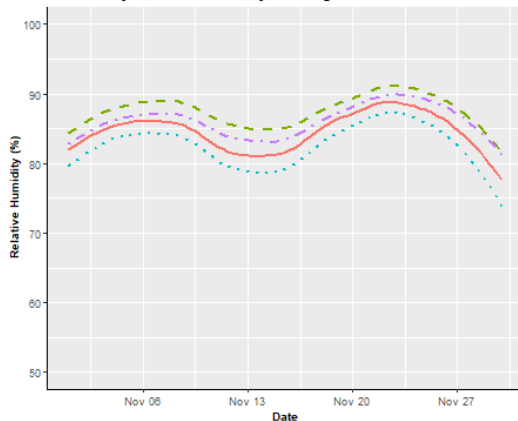
Maximum daily temperatures, Bellingen Island, November 2023



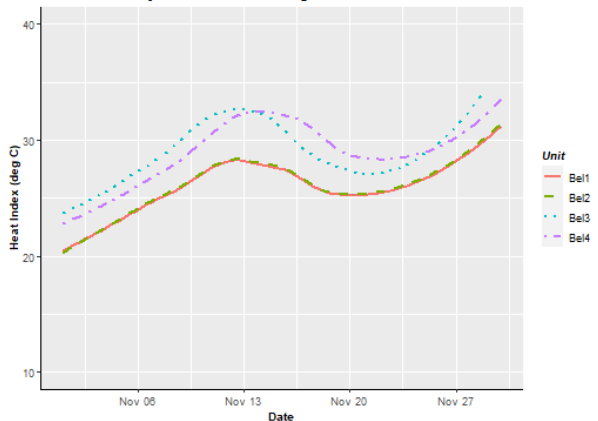
Minimum daily relative humidity, Bellingen Island, November 2023



Mean daily relative humidity, Bellingen Island, November 2023



Maximum daily heat index, Bellingen Island, November 2023

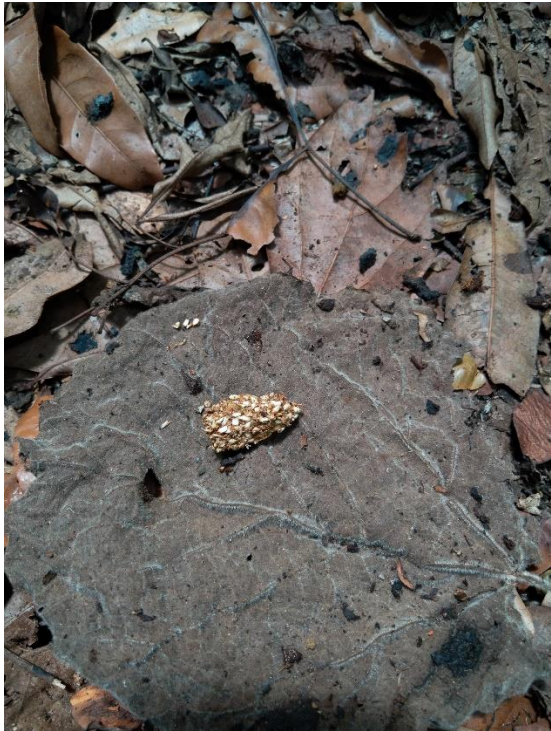


Area 4 regeneration:



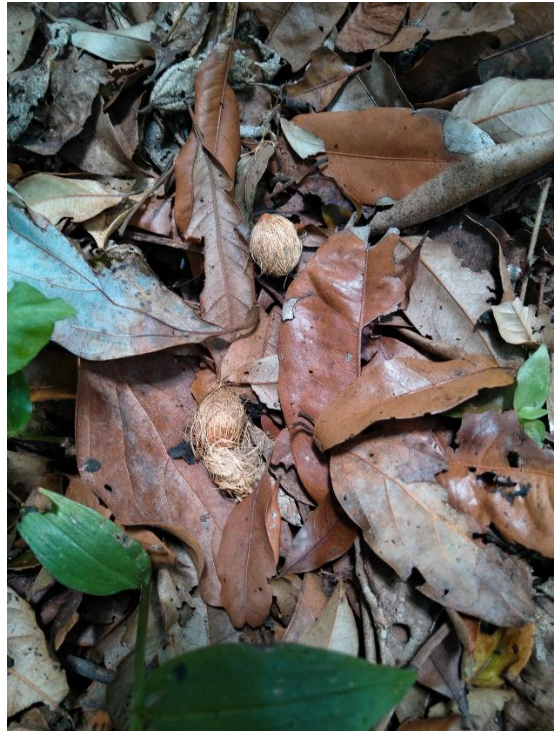
Feeding:

Fig spat:

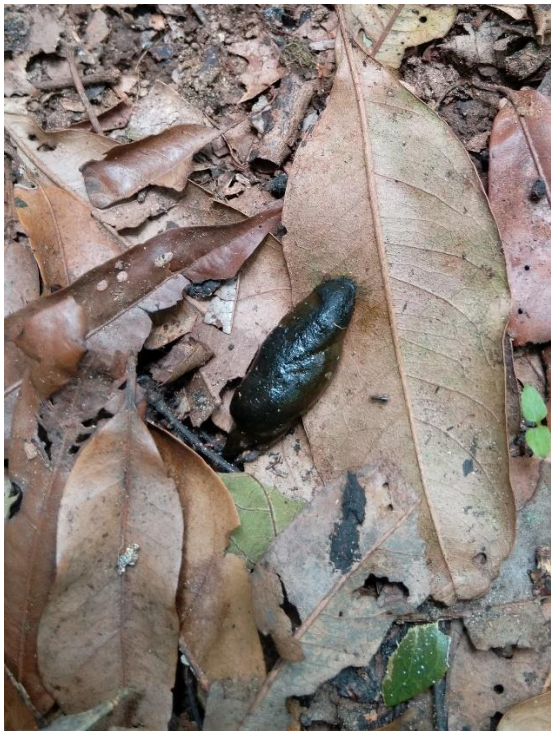


Palm seeds (probably Cocos Palm,

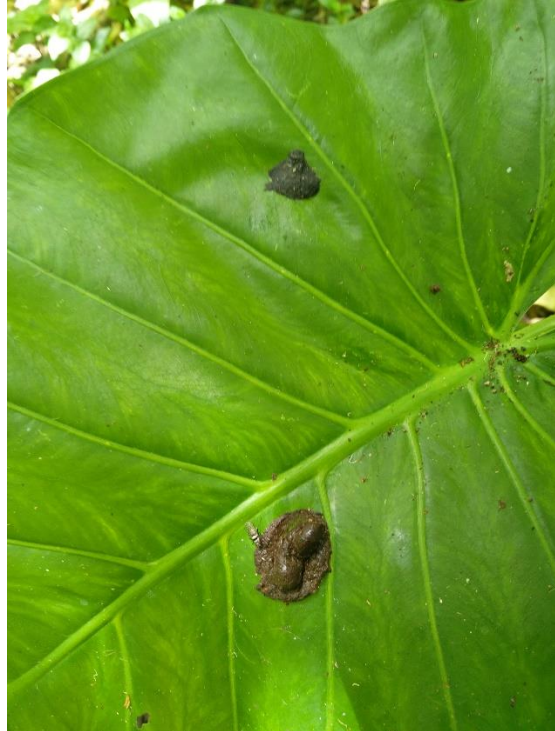
Syagrus romanzoffiana)



Scat, probably fruit:



Scats, probably eucalypt:



December 2023

Survey date: 29th December, 2023

Approximate count: 15,000

Population extents:



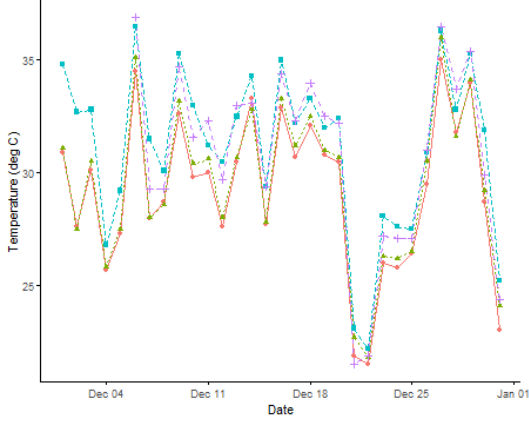
Population distribution:



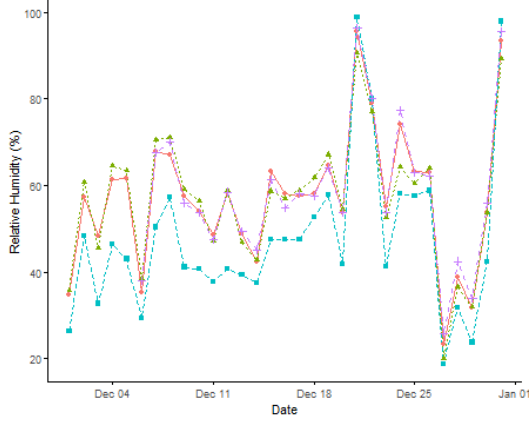
Population demographics:

Sample:	1	2	3	4	5	6	7	8	9	10	Totals	Percentages
GHFF Adult Male	3	3	6	3	4	5	3	5	3	4	39	39%
GHFF Adult Female	4	5	4	5	5	1	4	4	6	5	43	43%
GHFF Juvenile				2			2				4	4%
GHFF Mum & Pup	3	2			1		1	1	1	1	10	10%
BFF Adult Male						2					2	2%
BFF Adult Female						2					2	2%
BFF Juvenile											0	0%
BFF Mum & Pup											0	0%
											Total	Average count
10x10 m area count	35	25	150	90	60	75	50	110	45	50	690	69

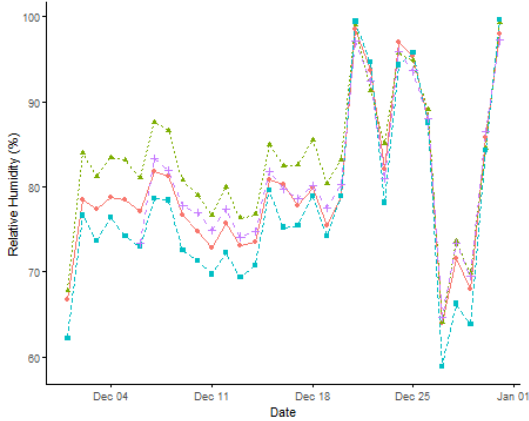
Maximum daily temperatures, Bellingin Island, December 2023



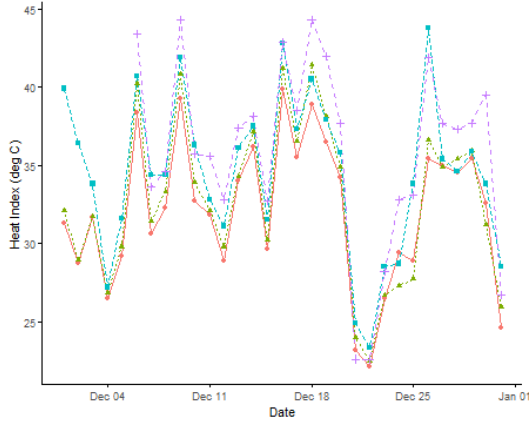
Minimum daily relative humidity, Bellingin Island, December 2023



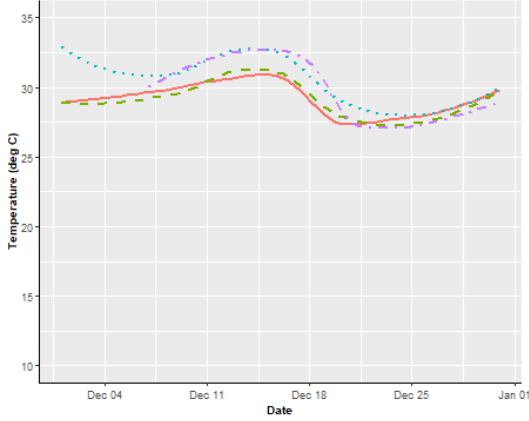
Mean daily relative humidity, Bellingin Island, December 2023



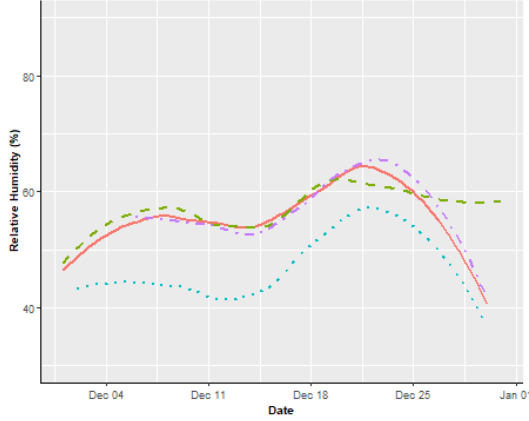
Maximum daily heat index, Bellingin Island, December 2023



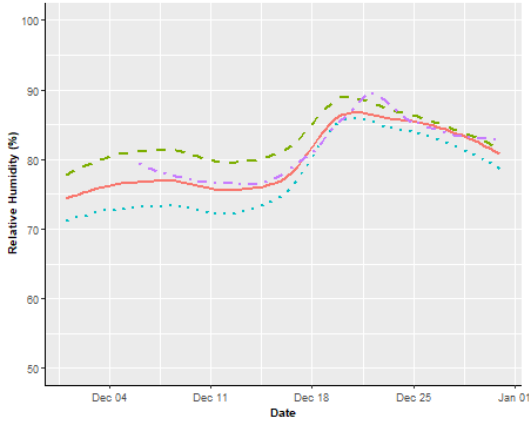
Maximum daily temperatures, Bellingin Island, December 2023



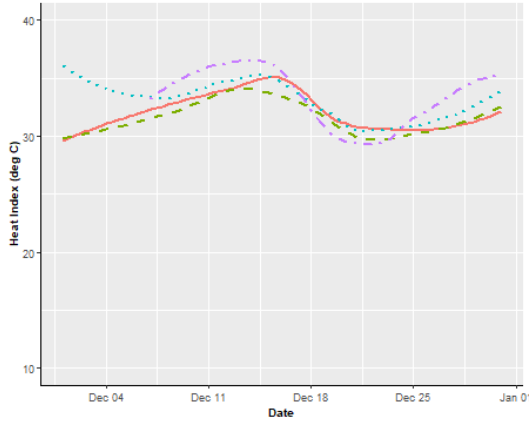
Minimum daily relative humidity, Bellingin Island, December 2023



Mean daily relative humidity, Bellingin Island, December 2023



Maximum daily heat index, Bellingin Island, December 2023



January 2024

Survey date: 24th January, 2024

Approximate count: 6,500

Population extents:

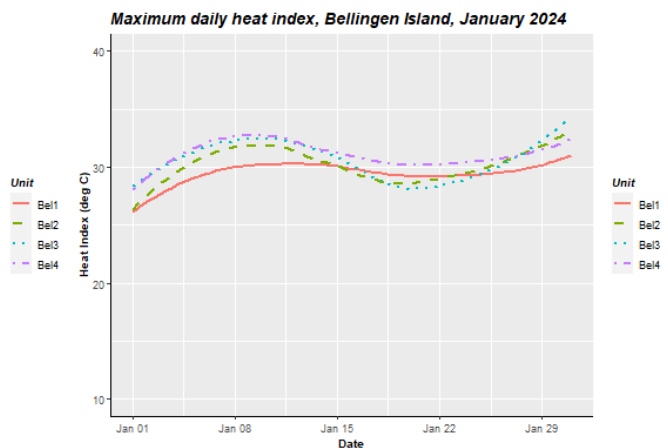
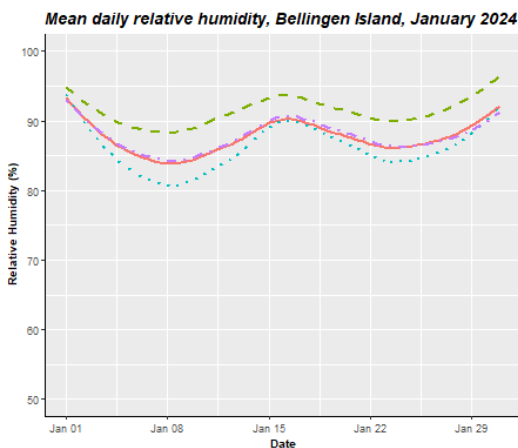
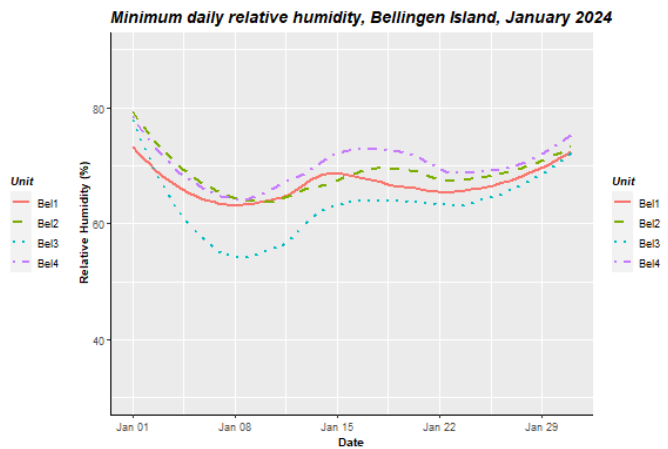
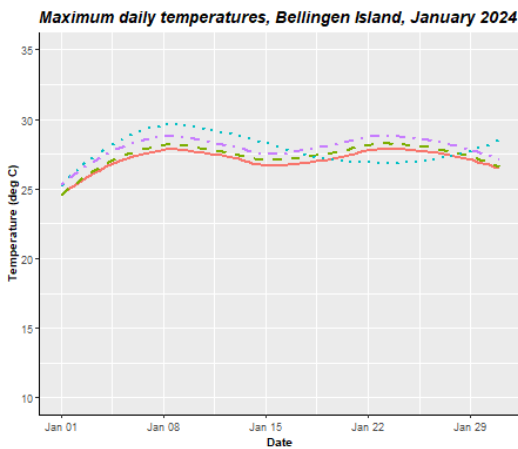
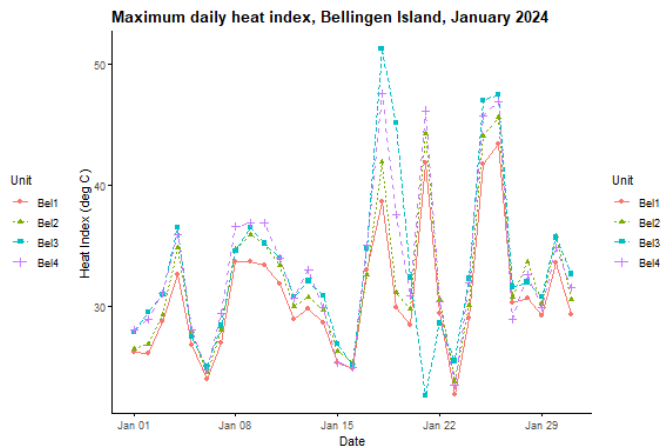
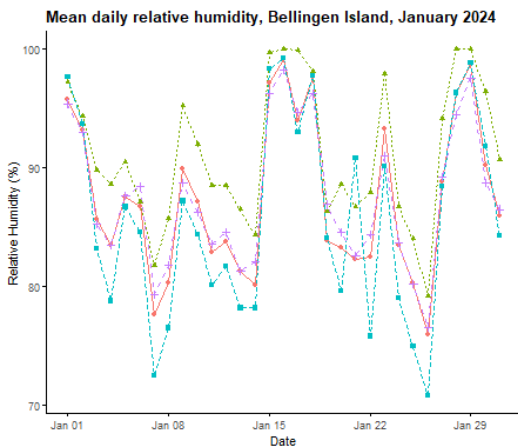
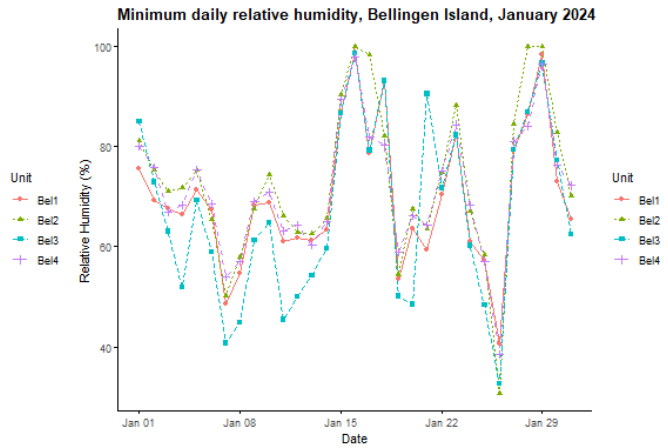
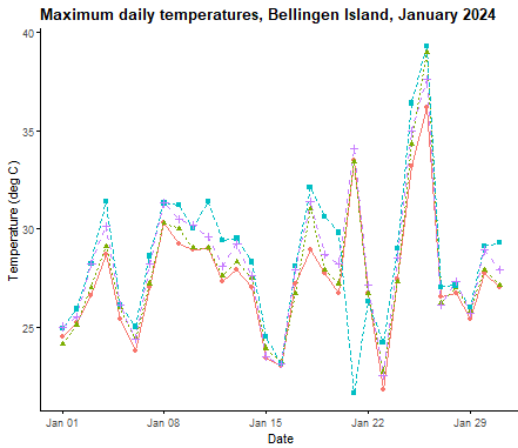


Population distribution:



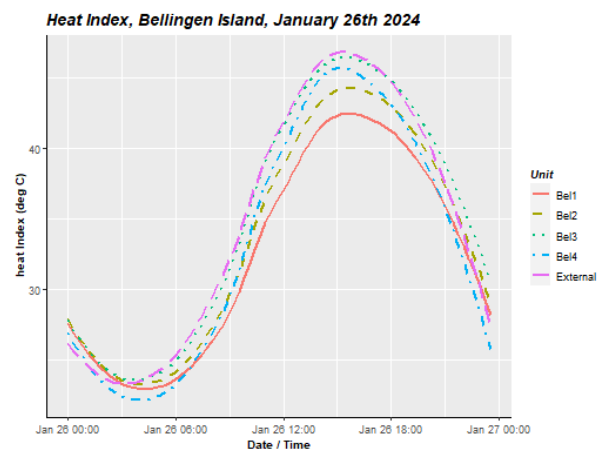
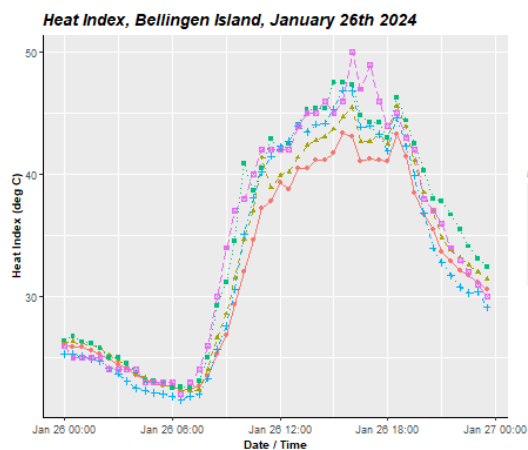
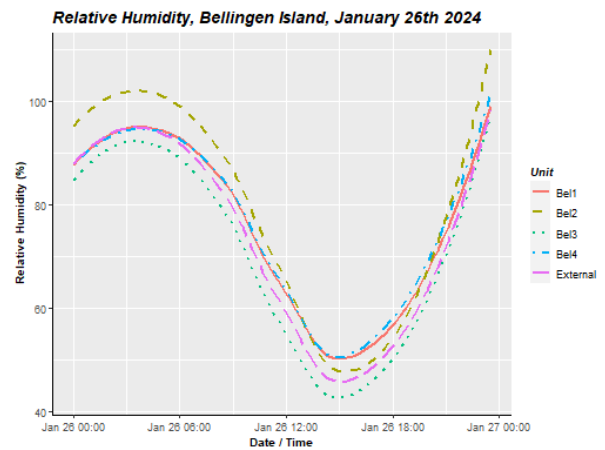
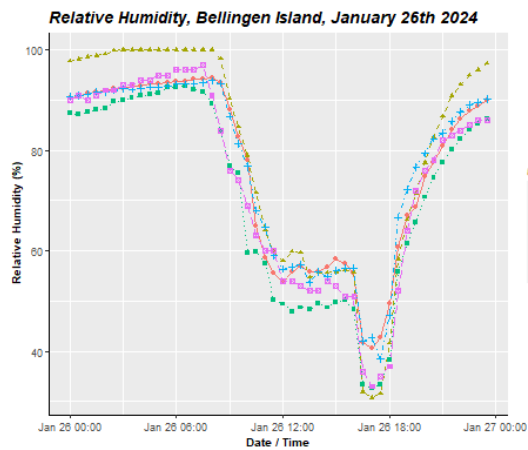
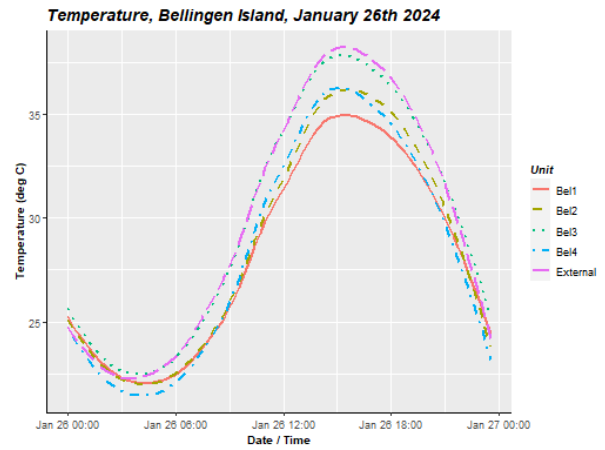
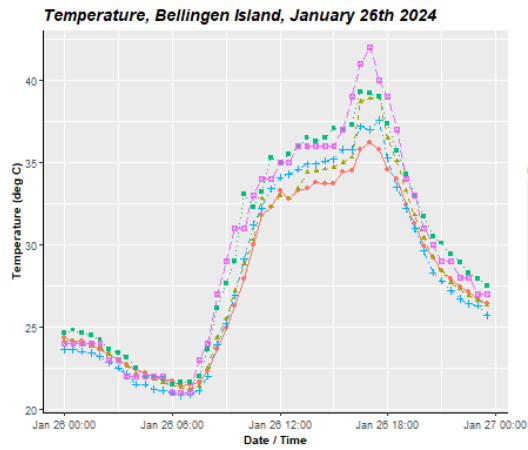
Population demographics:

Sample:	1	2	3	4	5	6	7	8	9	10	Totals	Percentages
GHFF Adult Male	3	4	5	4	3	4	4	4	2	3	36	36%
GHFF Adult Female	5	4	5	2	6	5	4	5	6	6	48	48%
GHFF Juvenile	2	2			1	1	1		2		9	9%
GHFF Mum & Pup				2			1	1		1	5	5%
BFF Adult Male				1							1	1%
BFF Adult Female				1							1	1%
BFF Juvenile											0	0%
BFF Mum & Pup											0	0%
											Total	Average count
10x10 m area count	41	70	65	53	47	27	120	55	45	70	593	59



High heat day – January 26th, 2024.

“External” data is from a Davis weather station located approximately 1km from the camp.



February 2024

Survey date: 28th February, 2024

Approximate count: 5,500

Population extents:



Population distribution:



Population demographics:

Sample:	1	2	3	4	5	6	7	8	9	10	Totals	Percentages
GHFF Adult Male	1	4	4	3	5	2	3	3	3		28	28%
GHFF Adult Female	2	5	4	4	5	3	4	5	5		37	37%
GHFF Juvenile	3	1	2	1		1	2	1			11	11%
GHFF Mum & Pup				2		1	1	1	2		7	7%
BFF Adult Male	2					1					3	3%
BFF Adult Female	2					2					4	4%
BFF Juvenile											0	0%
BFF Mum & Pup											0	0%
											Total	Average count
10x10 m area count	65	130	95	85	30	45	60	50	25		585	65

