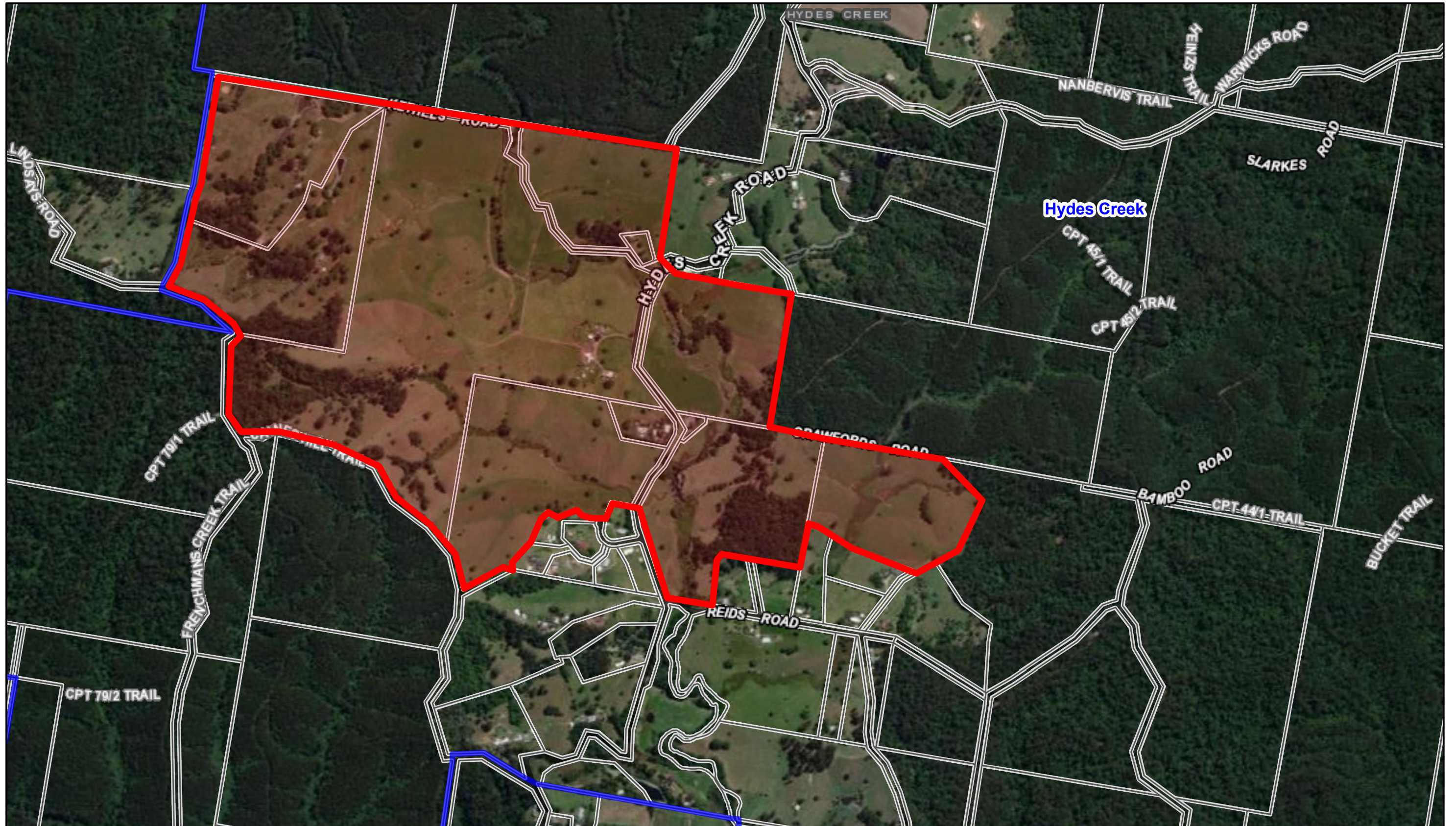



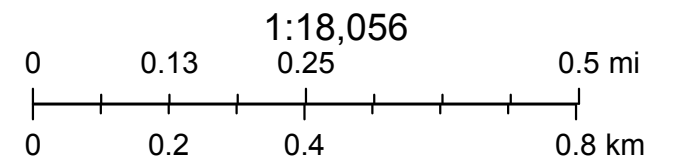
Hydes Creek precinct



4/5/2022, 2:21:14 pm

 Localities

 Lot Boundary

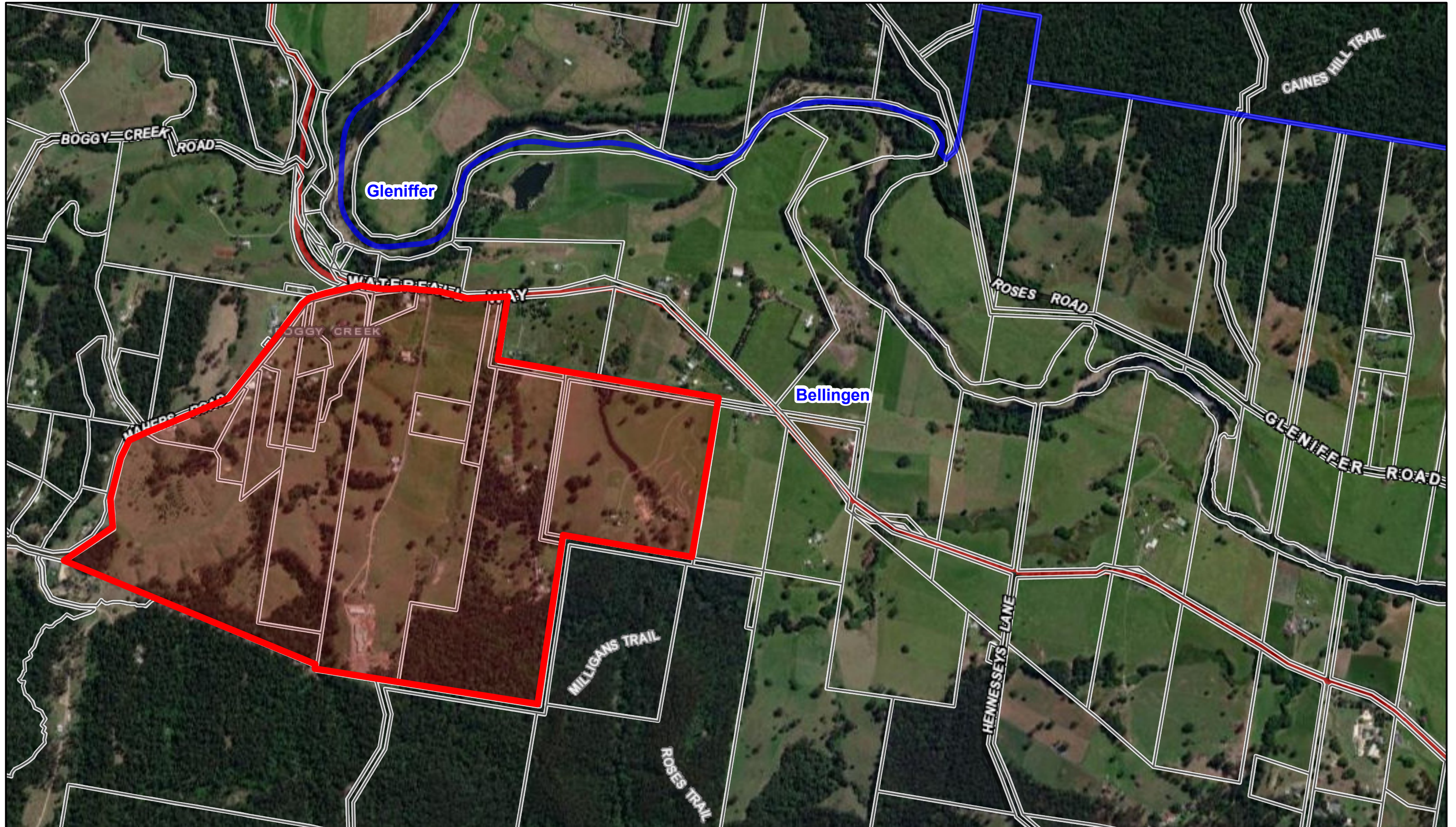


Source: Esri, Maxar, GeoEye, Earthstar Geographics, CNES/Airbus DS, USDA, USGS, AeroGRID, IGN, and the GIS User Community, © Department of Finance, Services & Innovation 2018



Source Data: Dept. Customer Services, Dept. Planning, Industry and

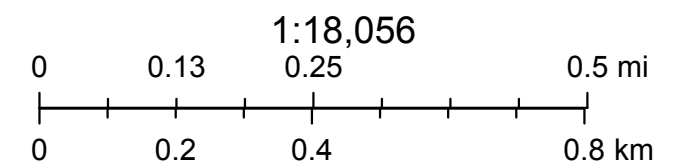
Disclaimer: Although much care has been taken in the creation of these maps, Bellingen Shire Council accepts no responsibility for any misprints, errors, omissions or inaccuracies.

Boggy Creek precinct



4/5/2022, 12:54:58 pm

-  Localities
-  Lot Boundary

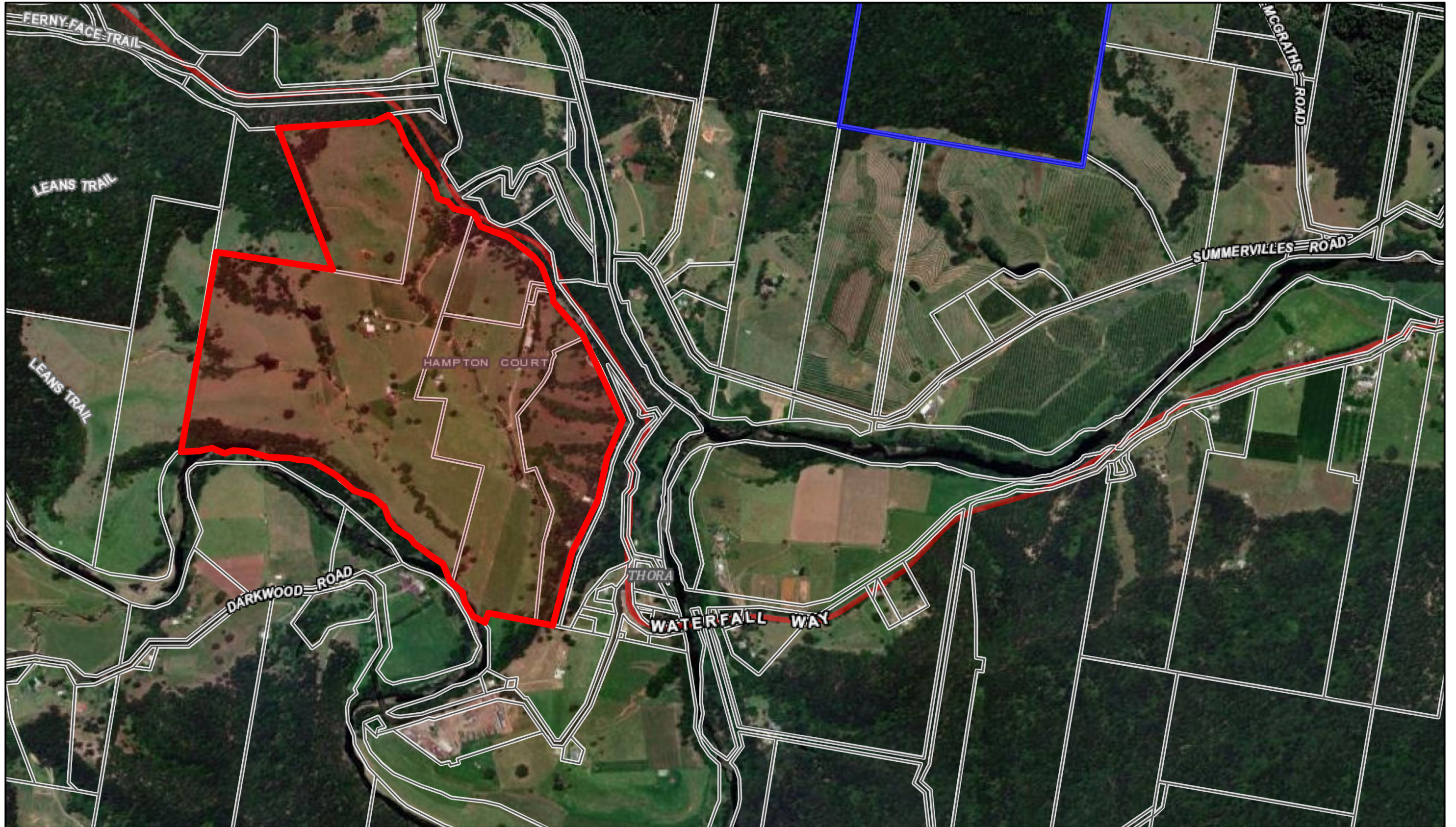


Source: Esri, Maxar, GeoEye, Earthstar Geographics, CNES/Airbus DS, USDA, USGS, AeroGRID, IGN, and the GIS User Community, © Department of Finance, Services & Innovation 2018

Source Data: Dept. Customer Services, Dept. Planning, Industry and

Disclaimer: Although much care has been taken in the creation of these maps, Bellingen Shire Council accepts no responsibility for any misprints, errors, omissions or inaccuracies.

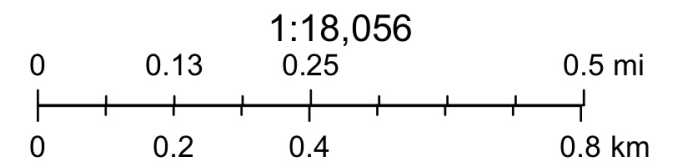
Darkwood Road precinct



4/5/2022, 1:06:22 pm

 Localities

 Lot Boundary

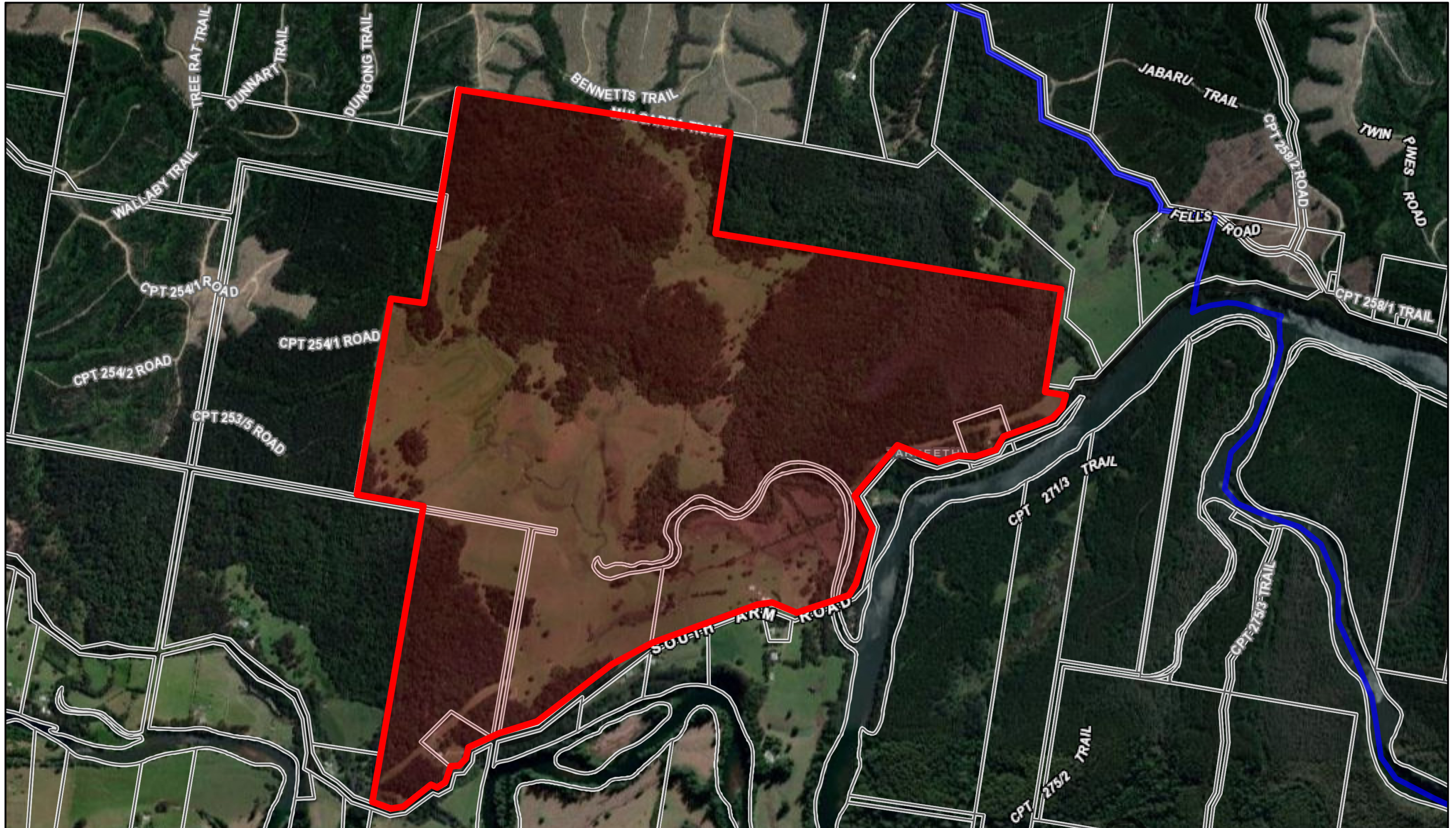


Source: Esri, Maxar, GeoEye, Earthstar Geographics, CNES/Airbus DS, USDA, USGS, AeroGRID, IGN, and the GIS User Community, © Department of Finance, Services & Innovation 2018


Source Data: Dept. Customer Services, Dept. Planning, Industry and

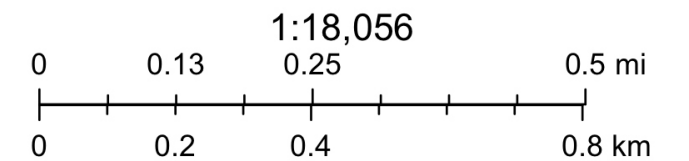
Disclaimer: Although much care has been taken in the creation of these maps, Bellinghen Shire Council accepts no responsibility for any misprints, errors, omissions or inaccuracies.

Brierfield precinct



8/5/2022, 8:10:31 pm

-  Localities
-  Lot Boundary



Source: Esri, Maxar, Earthstar Geographics, and the GIS User Community, © Department of Finance, Services & Innovation 2018

Source Data: Dept. Customer Services, Dept. Planning, Industry and

Disclaimer: Although much care has been taken in the creation of these maps, Bellingen Shire Council accepts no responsibility for any misprints, errors, omissions or inaccuracies.

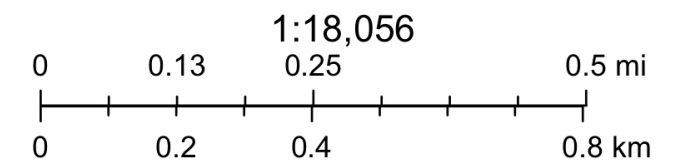
Gordonville precinct



4/5/2022, 2:02:30 pm

 Localities

 Lot Boundary



Source: Esri, Maxar, GeoEye, Earthstar Geographics, CNES/Airbus DS, USDA, USGS, AeroGRID, IGN, and the GIS User Community, © Department of Finance, Services & Innovation 2018

Source Data: Dept. Customer Services, Dept. Planning, Industry and

Disclaimer: Although much care has been taken in the creation of these maps, Bellingen Shire Council accepts no responsibility for any misprints, errors, omissions or inaccuracies.

Promised Land Precinct



22/9/2022, 2:01:09 pm

 Lot Boundary

